

Lincoln Minerals Limited is an Australian company with a portfolio of iron ore projects in the highly prospective Gawler Craton.

The Company has over 130 Mt of JORC Code compliant Inferred and Indicated iron ore Mineral Resources with additional high priority iron ore Exploration Targets(\*\*) in the range 1.1 billion to 2.8 billion tonnes. It aims to begin mining direct shipping (DSO) hematite iron ore in 2014 subject to finance and getting Government approvals.

The Company has secure land positions, with projects close to established infrastructure, including rail and heavy haulage road networks, shipping ports, electricity networks and water services – it has the closest iron ore deposit in South Australia to a shipping port.

As a result, Lincoln Minerals is well placed to take advantage of its mineral assets as well as markets in Asia, particularly China and India.

Lincoln Minerals' mission is to provide capital growth through exploration, discovery, and development of economic mineral deposits.

<b>Financials</b>	
Shares on issue	201 m
<b>Major Shareholders</b>	
Everchance Internat. Industrial Ltd	9.9 %
Australia NZ Resources Corp P/L	8.6 %
High Treasure International Ltd	7.5 %
Eng Hoe Lim	4.3 %
Keng Chuen Tham	3.8 %
Top 20 Shareholders	59.7 %

<b>Assets</b>	
GAWLER CRATON, SOUTH AUSTRALIA	
Tenements	26 ELs
Exploration area	4,077 km <sup>2</sup>
Gum Flat Iron Ore	1 Mt hematite DSO 109 Mt inferred hematite & magnetite
Kookaburra Gully Graphite	2.2 Mt inferred/Indicated flake graphite @ 15.1% TGC
Minbrie Copper	3.1% copper equivalent
Eurilla Iron Ore	22 Mt inferred hematite & magnetite @ 33% Fe
Cockabidnie Nickel -Cobalt	Up to 1.15% Ni & 0.33% Co
Jungle Dam Uranium	Up to 0.07% U over 5 hectare area
Nantuma Iron Ore	Potentially up to 0.7 to 1.8 Bt @ 14% to 20% Fe magnetite gneiss

<b>Board</b>	
Jin Yu Bo	Chairman
Dr A John Parker	Managing Director
Kee Guan Saw	Director
Eddie Pang	Director
Alex Lim	Director

Photo: Gum Flat

## South Australia

Lincoln Minerals' South Australian tenements are located on Eyre Peninsula in South Australia's Gawler Craton, a world-class mineral province that includes the world's fourth largest copper deposit and largest uranium deposit, along with major iron ore mines, gold, base metal & world-class graphite deposits.



## Iron Ore Potential

Project	Inferred/Indicated Resources	Exploration Targets (**)
Gum Flat Indicated	12.3 Mt @ 26.6% Fe 1.4 Mt @ 49.8% Fe	350-850 Mt @ 20-35% Fe (incl. resources)
Gum Flat Inferred	88.9 Mt @ 23.5% Fe 0.7 Mt @ 46.0% Fe	
Eurilla Inferred	21.7 Mt @ 33.3% Fe	50-100 Mt @ 30-35% Fe
Nantuma		0.7-1.8 Bt @ 14-20% Fe
Other		Cummins Wanilla
<b>TOTAL</b>	<b>131 Mt</b>	<b>1.1-2.8 Bt</b>

*It is emphasized that Exploration Target tonnage and grade estimates are entirely conceptual in nature. There has been insufficient drilling in the immediate areas of these targets and it is uncertain if further exploration will result in the estimation of a Mineral Resource.*

*Inferred and Indicated Mineral Resources are based on drilling and JORC Code 2004*

*Mt = million tonnes Bt = billion tonnes*

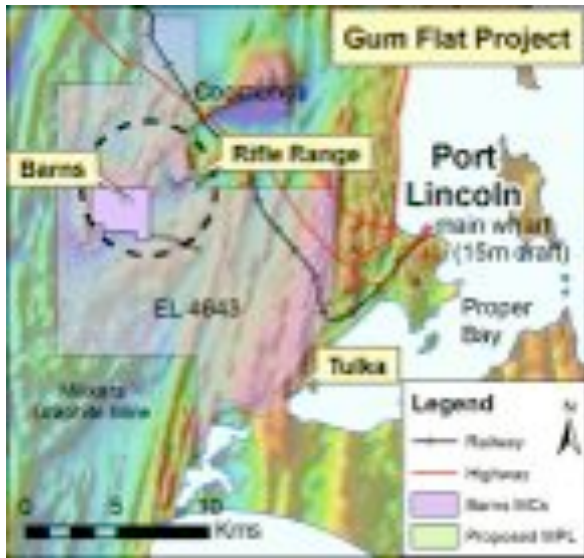
## Gum Flat

- Within 20 km of Port Lincoln, an existing port capable of handling Panamax ships
- More than 100 Mt of iron ore, most of it magnetite but with some hematite-goethite suitable for direct shipping (DSO ≥50% Fe). Magnetite ore will be processed into a high grade concentrate before export
- Subject to obtaining finance and getting all necessary approvals, Lincoln Minerals plans to begin exporting DSO in 2014 via Port Lincoln
- Two-stage development plan:
  - Stage 1 – mine and export up to 250,000 tonnes per annum hematite-goethite DSO
  - Stage 2 (ca. 2016 subject to sustained iron ore prices) – mine up to 10 Mtpa magnetite ore & process onsite to produce up to 2 Mtpa high grade concentrate (>67% Fe)
- Mining Lease
  - Mining Lease application prepared & awaiting submission
  - Groundwater licensing in progress

## Eyre Peninsula Iron Ore Projects

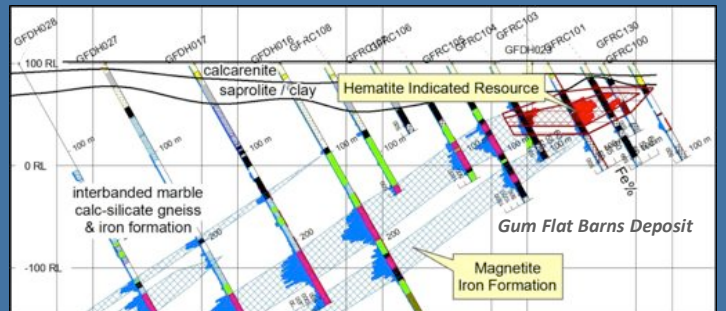
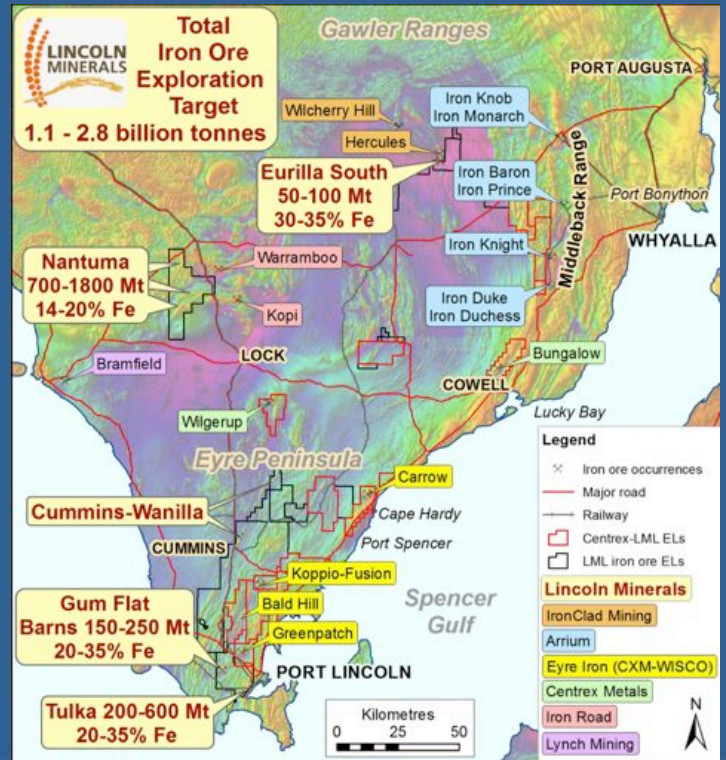
### High priority iron ore targets within the Middleback Iron Ore Province of eastern Eyre Peninsula

- The Middleback Iron Ore Province has potential to contain several billion tonnes of iron ore including iron ore mines of the Middleback Ranges, where over 250Mt of high grade lump hematite (& magnetite) has been mined over the last 110 yrs
- Lincoln Minerals has iron ore projects at Gum Flat, Eurilla, Nantuma and in the Cummins-Wanilla area
- Gum Flat (Stage 1):**
  - Small hematite-goethite DSO at 49.8% Fe

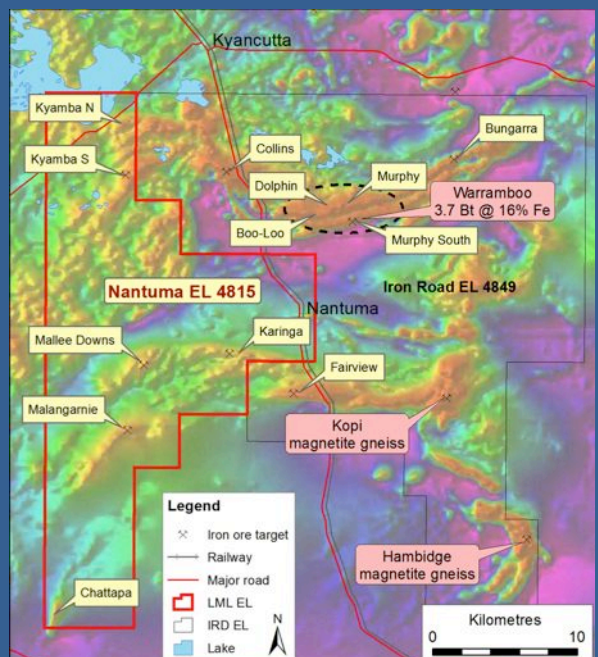


- Potential for low operating cost DSO operation (<\$40 /t)
- Relatively low capital expenditure ~\$30 million
- Environmentally friendly container option with shipping out of Port Lincoln only 20km from proposed mine.
- Gum Flat (Stage 2)**
  - Magnetite Indicated and Inferred Mineral Resource 104.7 Mt at 24.0% Fe (17.9% DTR magnetite concentrate)
  - Scoping study completed for 10 mtpa mine to produce ~2 mtpa high grade (~67% Fe) magnetite concentrate
  - Ship from proposed new ports at either Port Spencer or Cape Hardy
  - Priority Exploration Targets\*\* (in addition to above resources) 250-750 Mt at 20-35% Fe
- Nantuma:**
  - Immediately adjacent to Iron Road Limited's 2.9 billion tonne Warramboos iron ore deposits
  - At least 25km of moderate to high intensity aeromagnetic anomalies
  - 13.5km of Priority 1 anomalies define a 700 to 1,800 million tonne Exploration Target (\*\*) at 14% to 20% Fe to 300m below ground level
- Eurilla:**
  - Magnetite and hematite Inferred Resource 21.7 Mt at 33.3% Fe
  - Priority Exploration Targets (\*\*) 50-100 Mt at 30-35% Fe
  - Potential for DSO hematite >50% Fe
- Cummins-Wanilla:**
  - Numerous aeromagnetic anomalies and some outcrop of magnetite BIF

## Lincoln Minerals' Tenements, South Australia



## Nantuma Iron Project



\*\* It is emphasized that Exploration Target tonnage estimates are entirely conceptual in nature and it is uncertain if further exploration or drilling will result in the estimation of a Mineral Resource