



**Cornerstone investment opportunity
in a new world-class high grade, low cost graphite mine**

Kookaburra Gully (SA)

Mining Lease Granted June 2016

**located in one of the Top 10 most attractive
mining jurisdictions in the world
(Fraser Institute's March 2016 ratings)**

SA Chamber of Mines & Energy Presentation
28 July 2016
ASX : LML
www.lincolnminerals.com.au

Kookaburra Gully
proposed mine site

Key investment appeal

**Mineral Lease granted 3rd June 2016
for flagship Kookaburra Gully project**



\$3.2 million raised on back of Mineral Lease grant

- Located in South Australia's **world-class graphite-rich metallogenic province** of Eyre Peninsula 35kms north of export gateway of Port Lincoln – region's graphite profile comparable to iron ore's dominant Pilbara profile
- Deposit hosts **high grade flake graphite – a global Top 10 graphite deposit**
- **Will be Australia's premier graphite mine** with start-up ~40,000 tonnes per year
- **High purity graphite concentrate** (up to 98% TGC) from conventional flotation and easily upgraded to 99.9% TGC
- Offers one of the world's lowest cost graphite sector entry points
- **Targeting maiden production as soon as next year 2017**
- Existing water, power, road/rail/sea export infrastructure close-by
- **Entering a multi-billion dollar “new era” expanding global graphite market**

Investment options: mine financing, off-take, direct equity or provision of environmental/engineering/mining/processing solutions & equipment

Project owner: Lincoln Minerals Limited

Focused Board and Management

Non-Executive Chairman - Mr Jin Yubo

Managing Director - Dr Allan John Parker

Non-Executive Director - Mr Eddie Lung Yiu Pang

Non-Executive Director - Mr James Tenghui Zhang



- Unwavering, long-term focus on owning, developing and profitably extracting the multi-commodity mineral wealth of South Australia's richly endowed Eyre Peninsula
- Graphite is the main strategic investment
- Other assets include substantial magnetite and hematite resources and copper targets in a region with a long history of graphite, iron ore and copper mining

ASX Code	LML
Market Capitalisation	A\$22.1 million
Shares on issue	368.4 million
52 Week range	\$0.03 – \$0.08
Cash at 30 June 2016	A\$2.99 million
Debt	NIL
Tenement holdings	3,085 km ²

Experienced Chinese Directors



- **Mr Jin Yubo: Non-Executive Chairman**

Has a Master of International Law from National Chi Nan University, a chairman or board member of investment and real estate companies in China and Australia, a former committee member of a major Chinese city's People's Political Consultative Council, familiar with Chinese investment laws and regulations and has a wide range of political and business networks in mainland China, Hong Kong and other eastern and South East Asian countries.

- **Mr Eddie Pang: Non-Executive Director**

Has a Bachelor of Science with Honours degree in Chemistry, operates a Shanghai trading business supplying the Chinese market with Australian wool and wine, Chilean iron ore, cathode copper and timber, and exports Chinese products to Vietnam, the UAE and Canada. He is currently the Executive Chairman of ASX-listed mineral exploration and development company, Genesis Resources Limited.

- **Mr James Zhang: Non-Executive Director**

Over 20 years in real estate development and business management in mainland China, Hong Kong and Australia with extensive experience in funding real estate, infrastructure and property development and enterprise management. He is Director of Shanghai Jihai Investment Ltd Co. and member of Asset Management Association of China (AMAC).

Considerable experience in international Chinese investment & markets

Kookaburra Gully: a world class address



Canada's renowned Fraser Institute (March 2016) put **South Australia in the Top 10 mining jurisdictions in the world** for its mining investment attractiveness (mineral endowments and public policy) and hence security for resources investors.

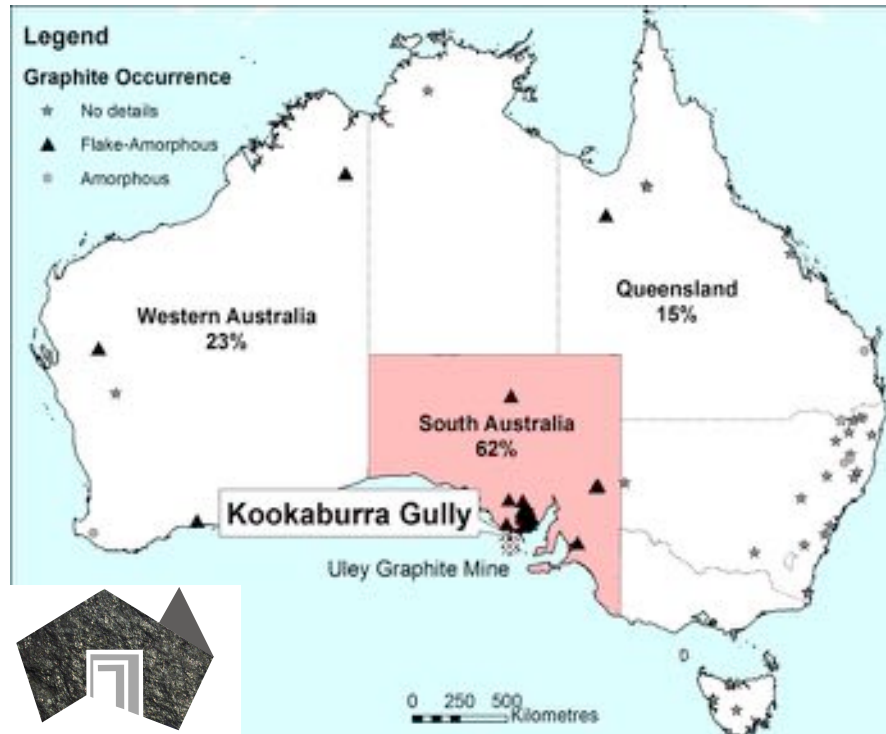
World Class Location

SA hosts over 60% of Australia's JORC graphite resources

Eyre Peninsula: highly prospective for world-class graphite

Includes Lincoln's 100%-owned Kookaburra Gully

SA graphite royalties 2% for the first 5 years (then 3.5%)



World Class JORC resource

Highly sought after premium flake graphite

Kookaburra Gully 2.2 Mt @ 15.1% TGC

Adjoining Koppio 1.85 Mt @ 9.8% TGC

Total contained graphite 567,000 t

Kookaburra Gully is a **Top 10 global graphite resource** including China based on grade

TGC = Total Graphitic Carbon

Kookaburra Gully: a world class deposit



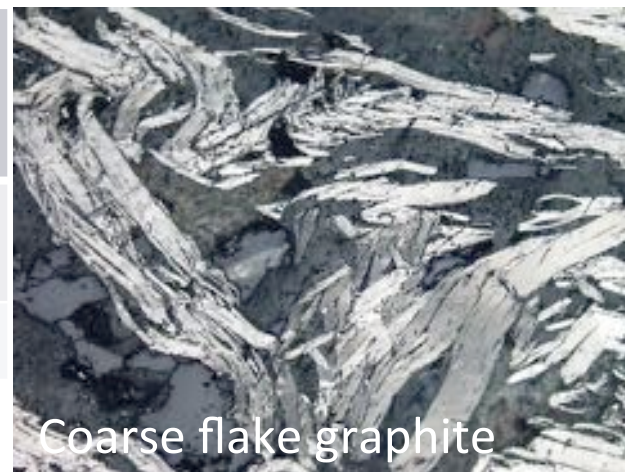
Graphite schist outcrops
at the surface



Drilling by Lincoln
in 2013-14 proved
up a high grade
JORC mineral
resource

Deposit	Combined Inferred & Indicated JORC Mineral Resource	Grade %TGC	Contained Graphite
Kookaburra Gully	2.2 million tonnes	15.1%	331,778 tonnes
Koppio	1.85 million tonnes	9.8%	180,733 tonnes

*Petrological studies show Kookaburra Gully graphite
as fine to coarse flakes with an average graphite
flake size of 350-500 microns*



Coarse flake graphite

100µm

Key Mining Lease Granted

**Mineral Lease
ML 6460**

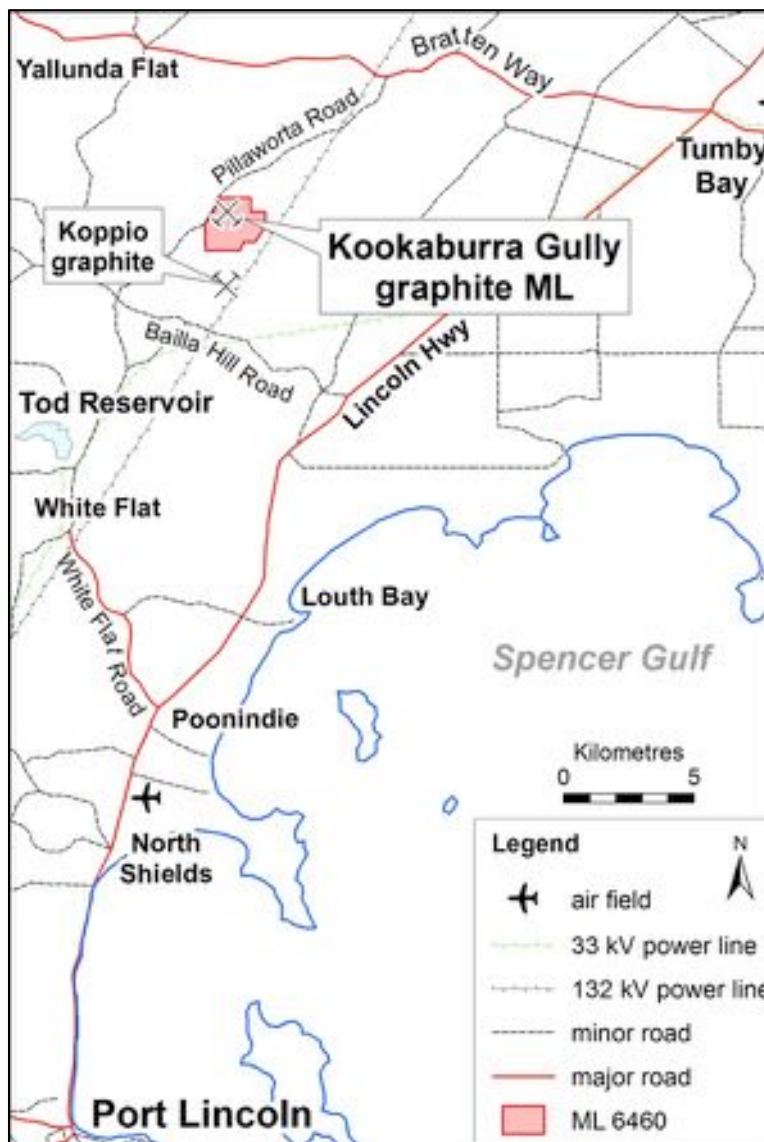
**Granted
3 June 2016**

**Preparation &
Approval of Program
for Environment
Protection &
Rehabilitation (PEPR)
is final requirement**

**Targeting Maiden
Production**

2017

(subject to Govt approvals)



- Has green light from Commonwealth Government Department of the Environment – **Not a Controlled Action**
- Capex <A\$50 million
- LOM Opex A\$630/t to A\$704/t concentrate (*)
- Water: 10km from Tod Reservoir + pit dewater
- Power: 5km from grid &/or onsite generation
- Export from Port Lincoln (35km) or Port Adelaide

() 90% recovery
FOB Port Adelaide
Refer 2015 Annual Report*

April 2016

Key MoU Signed with District Council

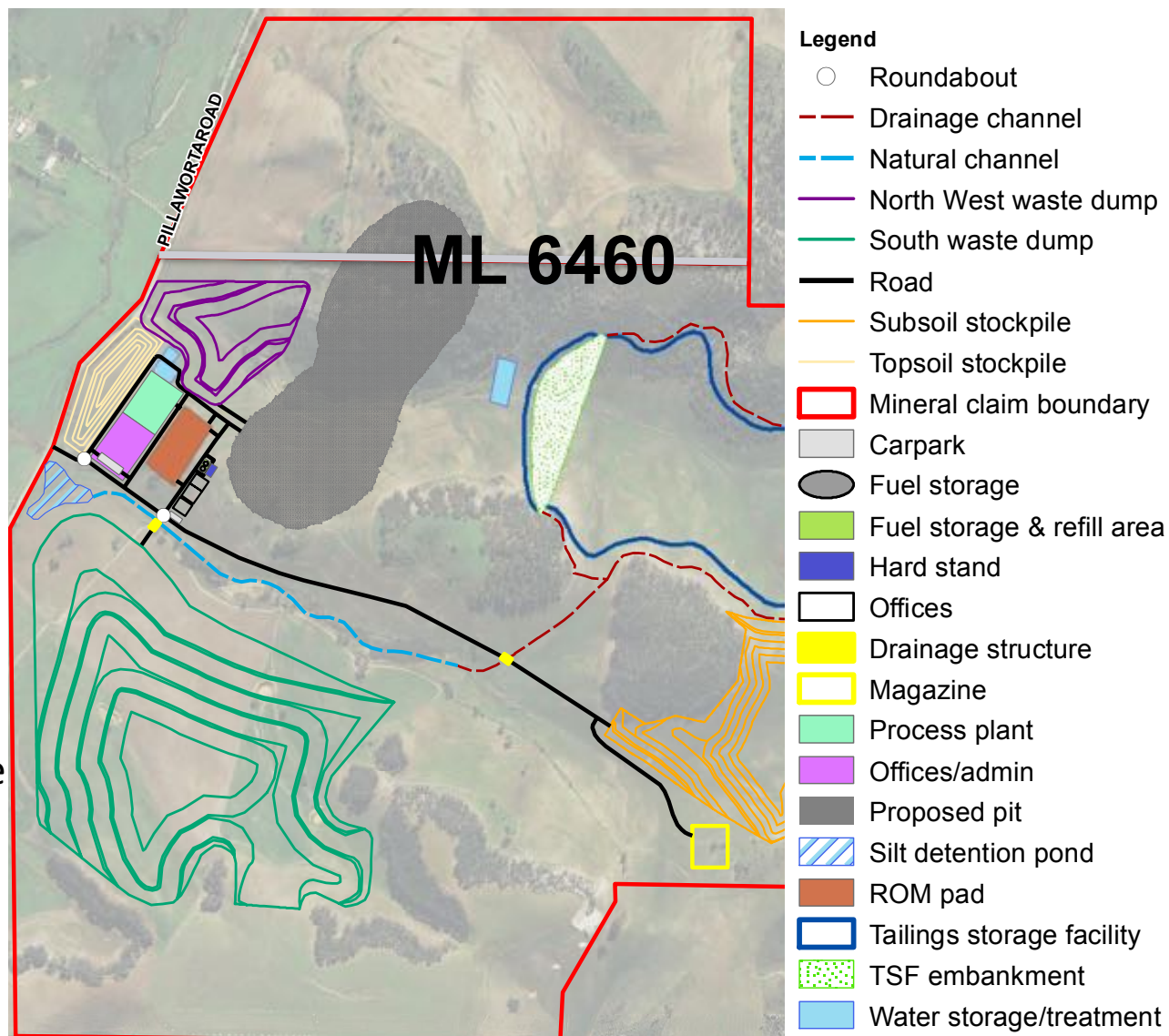
- **Memorandum of Understanding (MoU) with the District Council of Tumby Bay (DCTB) jointly signed on 6 April 2016**
- **Supports the Company's Kookaburra Gully graphite project**
- Framework to work together on proposed water pipeline from Tod Reservoir, upgrading and maintenance of roads, preparation of a Traffic Management Plan, and continuing engagement with the community in regard to business and employment opportunities
- MoU shows the willingness of Council and Lincoln Minerals to collaborate to achieve maximum benefits for this new mining opportunity for the Tumby Bay region



*Signing of the MoU with DCTB (from left)
DCTB Mayor Sam Telfer, DCTB CEO Trevor Smith,
LML MD Dr John Parker & LML Chairman Yubo Jin*

Small Mine Site Footprint

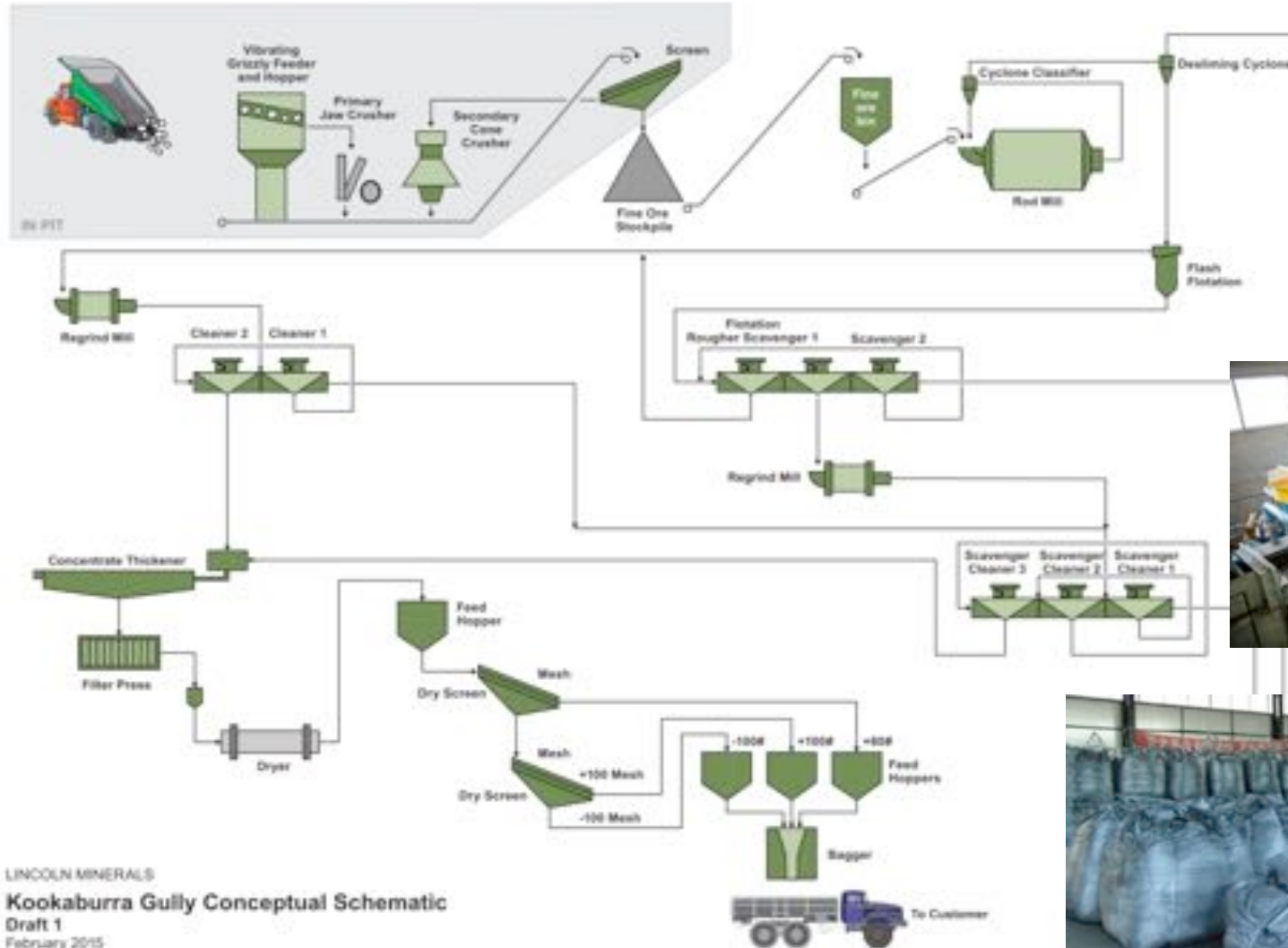
- Small mine site footprint 103 hectares
- 700m long open pit graphite mine
- Conventional flotation plant operating 24/7
- Process 250,000 tpa ore at nominal 15.4% TGC
- Produce up to 40,000 tpa concentrate
- High metal recovery (>80%)
- Delivers high grade (94-98% TGC) concentrate
- Chemical leaching to 99.95% TGC
- Packaging – bulka bags or containers



Kookaburra Gully – Simple Processing



Simple process flow sheet – grind, float, regrind, clean, dry, screen and export



LINCOLN MINERALS
Kookaburra Gully Conceptual Schematic
Draft 1
February 2015

Positive metallurgical outcomes



- Ongoing metallurgical test work points to production of high quality flake graphite
 - Delivers high grade (94-98% TGC) concentrate from simple flotation
 - Chemical leaching to 99.95% TGC
- New laboratory & pilot plant test work in Australia and China (2016) includes:
 - Larger samples (up to 25 tonnes)
 - High purity spherical graphite and expandable graphite tests



	Trench C-1		Trench C-2		Trench D	
Screened concentrate	Assay TGC%	Dist'n %	Assay TGC%	Dist'n %	Assay TGC%	Dist'n %
+150 µm	97.8	8.9	94.8	24.3	93.4	12.0
+106 µm, -150 µm	97.5	14.1	97.0	16.2	94.0	11.0
+75 µm, -106 µm	97.1	23.1	97.5	23.8	94.1	16.7
+20 µm, -75 µm	96.7	47.3	97.6	34.0	94.2	49.1
-20 µm	94.5	6.6	93.4	1.7	79.8	11.1

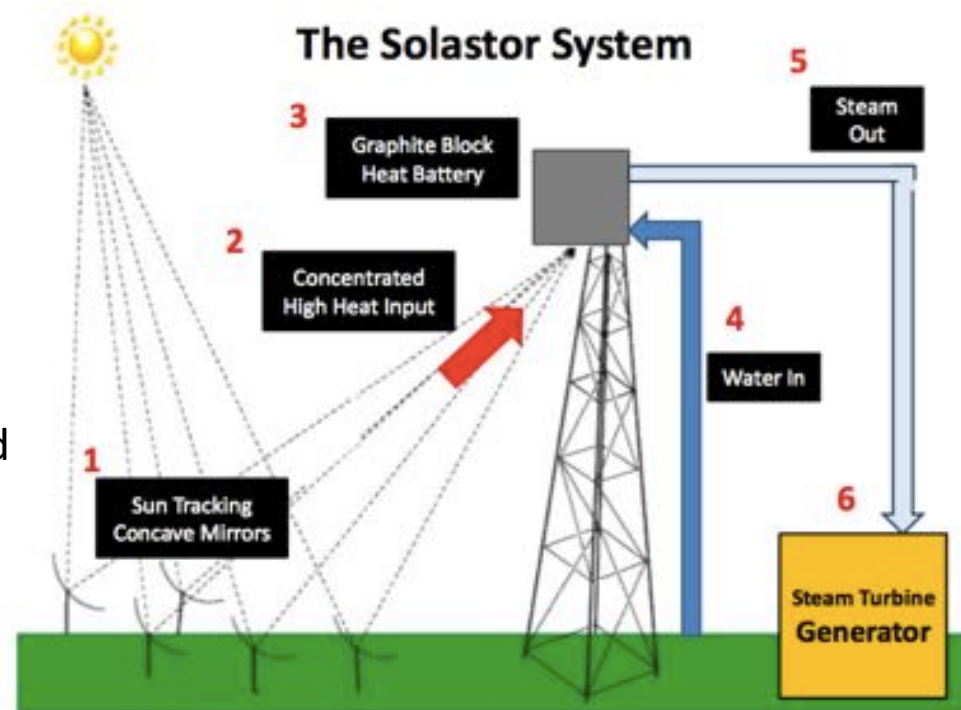


97.8% TGC coarse flake graphite from Kookaburra Gully

Metallurgical test results for near-surface flake graphite from Kookaburra Gully

Graphite Market Fundamentals

- Graphite in the form of **Spherical Graphite** is a key input in the manufacture of lithium-ion batteries widely used in **electric vehicles**, smart phones, portable computer devices and more – **battery backup for solar powered homes**
- Expandable Graphite** used in fire extinguishers & making graphite foil – expandable graphite has shown a **10% price increase over last 2 years**
- Graphite Foil** widely used for gaskets (eg engine head gaskets), as a thermal barrier in electrical applications, & in fuel cells
- Graphite also used in pencils, dry lubricants, steelmaking, pebble-bed nuclear reactors & much more including **new generation solar-thermal power systems (eg Solastor)**
- Proposed Solastor system....10 tonne graphite block heated to 800°C then used to convert water to steam to generate electricity. For Port Augusta proposal, at least 1700 graphite blocks or more than 17,000 tonnes of graphite would be required.

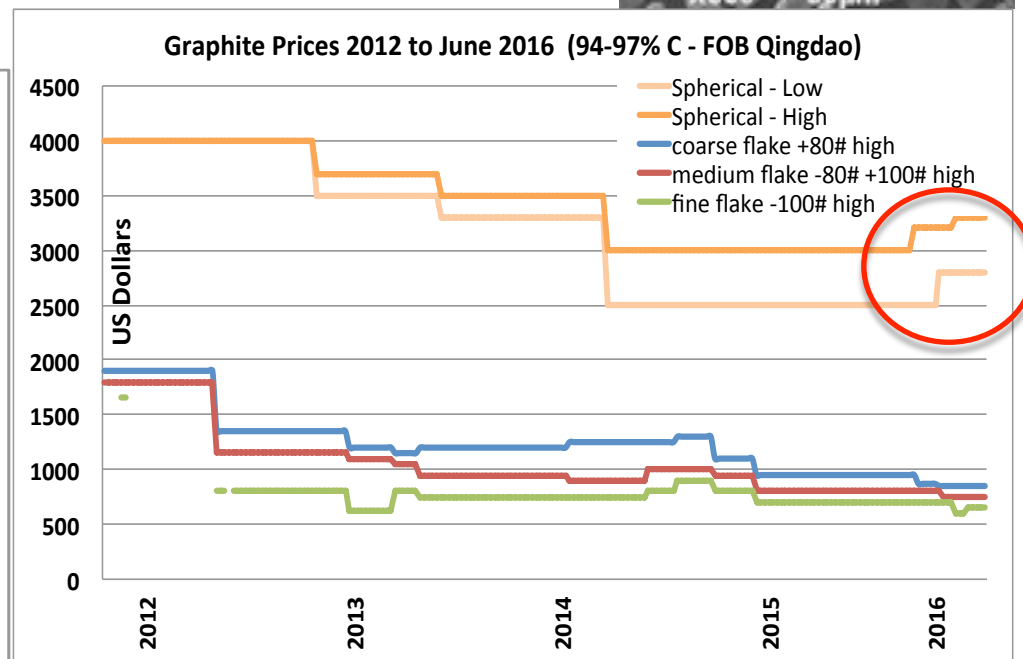
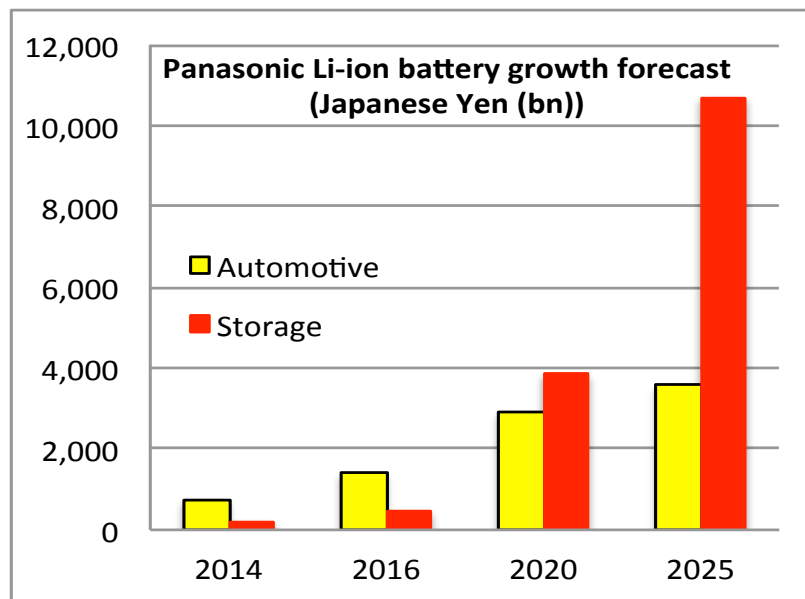
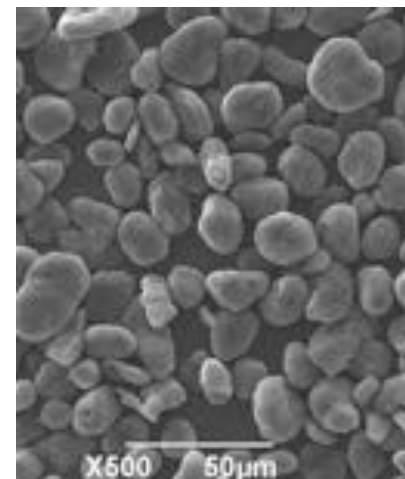


www.solastor.com.au

Spherical Graphite Fundamentals

BATTERY & ENERGY STORAGE COMMERCIALISATION

- Newgen electric cars – use and demand growing by at least 15%
- Massive emerging market for battery storage systems for homes
- It takes ~2.5 tonnes of natural flake graphite to produce 1 tonne spherical graphite
- Spherical graphite is micronised <20 µm & high purity >99.9% C
- About 60% of spherical graphite comes from natural flake graphite & increasing



Timescale to Production



Project Participation Opportunities

2016

- Direct equity in ASX-listed Lincoln Minerals Limited
- Kookaburra Gully flake graphite product off-take agreements
- Technological product development (flake graphite, high purity graphite & graphene)
- **Environmental & engineering services for the PEPR:**
 - Mine design including pit, tailings facility & waste rock facilities
 - Infrastructure both on- and off-lease including roads, drainage & power supply
 - **Water supply options/pipelines, both on- and off-lease – SoW issued**
 - Process plant design
 - Resource definition and geotechnical drilling
 - **Construction of groundwater extraction wells – SoW issued**
 - Environmental management plans for vegetation, groundwater, rehabilitation
 - Cultural heritage & community engagement management plans

2017 – as above plus

- Mining & processing plant supply & equipment (various components)
- Construction services for mine, process plant & infrastructure development
- Contract mining services
- Financial, legal & project management services

2017 in a nutshell....

Kookaburra Gully to become....

- . SA's newest mine in one of hottest commodities**
 - . only producing graphite mine in Australia**
 - . in a soaring new era global market**

THANKYOU

Dr A. John Parker

Managing Director

+61 8 8274 0243

Kookaburra Gully
proposed mine site



Important Notice



This presentation has been prepared by Lincoln Minerals Limited ("LML") and Australian Graphite Pty Ltd ("AGL") as an aid to a spoken explanation. It should not be considered as an offer or invitation to subscribe for or purchase any securities in LML or AGL nor as an inducement to make an offer or invitation with respect to those securities. AGL is a wholly-owned subsidiary of LML; all rights and interests in graphite minerals and associated minerals in certain tenements are assigned to AGL. Information in this presentation is a professional opinion only but is given in good faith.

Forward-Looking Statements

This presentation contains forward looking statements concerning the Kookaburra Gully Graphite Project. Statements concerning Mineral Resources, mine plans and project economics may be deemed to be forward looking statements in that they involve estimates based on specific assumptions. Forward-looking statements are not statements of historical fact, and actual events and results may differ materially from those described in the statements as a result of a variety of risks, uncertainties and other factors. Forward looking statements are based on AGL's and LML's beliefs, opinions and estimates as of the date the statements are made and no obligation is assumed to update forward looking statements if these beliefs, opinions and estimates should change or to reflect other future developments. Data and amounts shown in this presentation relating to capital costs, operating costs, graphite prices and project timelines are based on consultant reports and internally generated estimates and are best estimates only. Accordingly, AGL and LML cannot guarantee the accuracy and/or completeness of the figures or data included in the presentation. All dollar amounts are in Australian dollars unless otherwise stated.

Competent Person's Statement

Information in this presentation that relates to exploration activity, mineral resources and results was compiled by Dr A J Parker who is a Member of the Australasian Institute of Geoscientists. Dr. Parker is Managing Director of and has shares in Lincoln Minerals Limited. He has sufficient experience relevant to the styles of mineralisation and to the activities which are being presented to qualify as a Competent Person as defined by the JORC code, 2012. Dr. Parker consents to the release of the information compiled in this presentation in the form and context in which it appears.

Appendix



This presentation has been prepared by Lincoln Minerals Limited ("LML") as an aid to a spoken explanation. The information contained in this presentation is based on a number of public statements, Quarterly Reports and ASX releases made by LML:

References

- Lincoln Minerals, 2013. Updated Graphite Mineral Resources for Lincoln's world-class Kookaburra Gully project in South Australia's Eyre Peninsula. *Lincoln Minerals Limited, ASX Announcement 19 December 2013.*
- Lincoln Minerals, 2015. Maiden graphite resource for second Lincoln deposit in SA's Eyre Peninsula lifts total inventory by >50% in this world-class province. *Lincoln Minerals limited, ASX Announcement 13 July 2015.*
- Australian Graphite Limited, 2015. Community Information Update No.4, Kookaburra Gully Graphite Mine, Mining Lease Proposal. *Lincoln Minerals Limited website, September 2015*
- Lincoln Minerals, 2015. 2015 Annual Report. *Lincoln Minerals Limited 26 October 2015.*
- Lincoln Minerals, 2016. Quarterly Activities Report June 2016. *Lincoln Minerals Limited 22 July 2016.*

Information extracted from previously published reports identified in this report is available to view on the Company's website www.lincolnminerals.com.au. The company confirms that it is not aware of any new information or data that materially affects the information included in the original market announcements and, in the case of estimates of Mineral Resources, that all material assumptions and technical parameters underpinning the estimates in the relevant market announcements continue to apply and have not materially changed. The company confirms that the form and context in which the Competent Person's findings are presented have not been materially modified from the original market announcements.

Kookaburra Gully & Koppio Mineral Resources

Table 2. Total combined Mineral Resources for Koppio and Kookaburra Gully

Mineral Resource Classification	Cutoff Grade (% TGC)	Tonnage (Mt)	Average Grade (% TGC)	Contained Graphite (tonnes)	Density (g/cc)
Koppio					
High-grade Core (Domain 1) – Inferred	5%	1.85	9.76	180,733	2.67
Low-grade Halo (Domain 2) – Inferred	2%	1.21	3.18	38,560	2.80
Kookaburra Gully					
High-grade Core (Domain 1) - Indicated	5%	1.45	13.74	199,193	2.56
Low-grade Halo (Domain 2) – Indicated	2%	0.62	3.04	18,984	2.54
High-grade Core (Domain 1) – Inferred	5%	0.73	16.17	117,964	2.50
Low-grade Halo (Domain 2) – Inferred	2%	0.40	2.91	11,538	2.54
TOTAL (>2% TGC)		6.26	9.05	566,972	2.63

Mt = million tonnes TGC = Total Graphitic Carbon

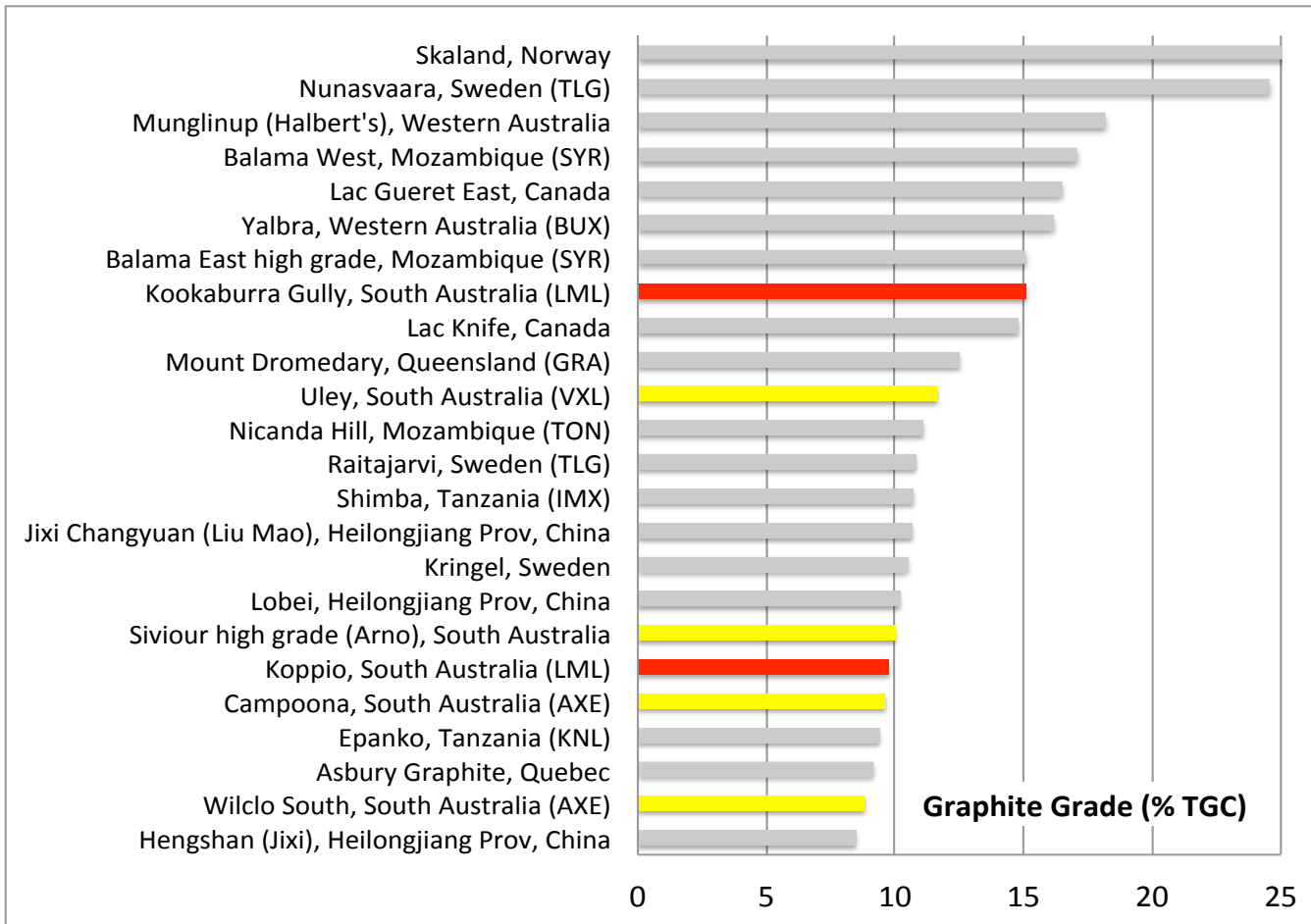
Reference:

Lincoln Minerals, 2015. Maiden graphite resource for second Lincoln deposit in SA's Eyre Peninsula lifts total inventory by >50% in this world-class province. *Lincoln Minerals limited, ASX Announcement* 13 July 2015.

In world Top 10 graphite deposits by grade



Kookaburra Gully is a **high grade coarse flake graphite deposit** and is capable of delivering near-term production at low cost in addition to graphene development research with Melbourne's Monash University and Guangdong University of Technology in China



"Kookaburra Gully is within the Top 10 global resources including China based on graphite grade."

TGC = Total Graphitic Carbon

Corporate Directory



Directors

Mr Jin Yubo, Chairman

Dr A John Parker, Managing Director

Mr Eddie Lung Yiu Pang, Non Executive

Mr James Tenghui Zhang, Non Executive

Company Secretary

Jaroslav (Jarek) Kopias

Registered and Principle Office

Suite 4, Level 7, 350 Collins Street

Melbourne Victoria 3000

Phone: (613) 9600 0782

Facsimile: (613) 9600 0783

Email: info@lincolnminerals.com.au

Website: www.lincolnminerals.com.au

Adelaide Office

28 Greenhill Road

Wayville SA 5034

Phone: (618) 8274 0243

Share Registry

Computershare Investor Services Pty Ltd

Level 5, 115 Grenfell Street

Adelaide SA 5000

Phone 1300 365 998

Banker

National Australia Bank

Auditor

Grant Thornton

ASX code LML

ABN 50 050 117 023