



# **Graphite Mining Lease imminent in Australia's foremost graphite province: SA's Eyre Peninsula**

**LINCOLN MINERALS LIMITED**  
**ASX : LML**  
**[www.lincolnminerals.com.au](http://www.lincolnminerals.com.au)**

Kookaburra Gully Trench 4  
12m @ 20.5% graphitic carbon

# Kookaburra Gully graphite mine upside



- **Mining Lease imminent** for Kookaburra Gully near Port Lincoln
- Key trigger to **underpinning offtake/project financing** contracts
- Shallow deposit among **world Top 10** highest grade graphite deposits
- Part of strong flake graphite footprint on SA's Eyre Peninsula
- Kookaburra Gully's **low cost** maiden mine establishment **<A\$50 million**
- **Targeting maiden production** as soon as **next year** (\*\*)
- Startup ~40,000 tonnes per annum high grade (93-98% TGC) graphite concentrate
- Potential **7<sup>+</sup> year mine life and enhanced production opportunity**
- 25% partner in new Chinese international graphite trading exchange
- Upside from partnering graphene research with Australia-China universities

*\*\* subject to Government approvals and finance  
TGC = Total Graphitic Carbon*

# Kookaburra Gully: a world class address



## World Class Location

SA hosts 61% of Australia's JORC graphite resources

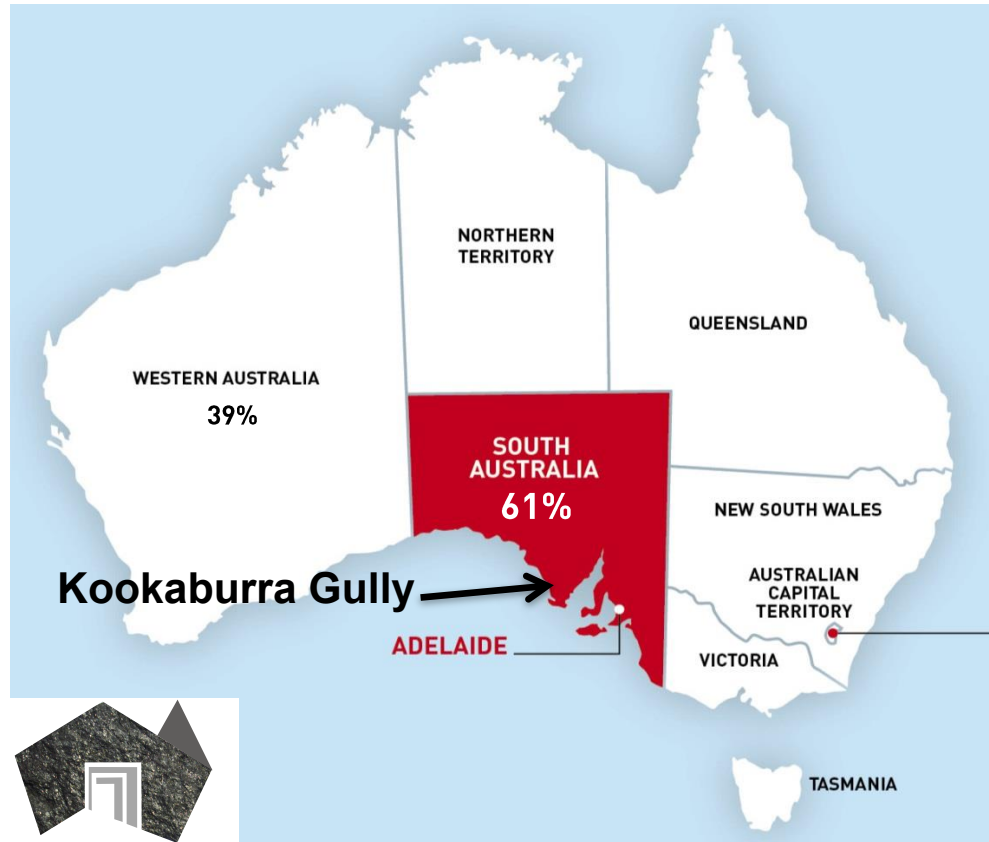
On Eyre Peninsula: highly prospective for world-class graphite

Includes Lincoln's 100%-owned Kookaburra Gully

SA in world Top 10 "attractiveness" for mining investment (\*)

SA graphite royalties 2% for the first 5 years (then 3.5%)

(\*) *Fraser Institute*



## World Class JORC resource

Highly sought after premium flake graphite

Kookaburra Gully  
2.2 Mt @ 15.1% TGC

Adjoining Koppio  
1.85 Mt @ 9.8% TGC

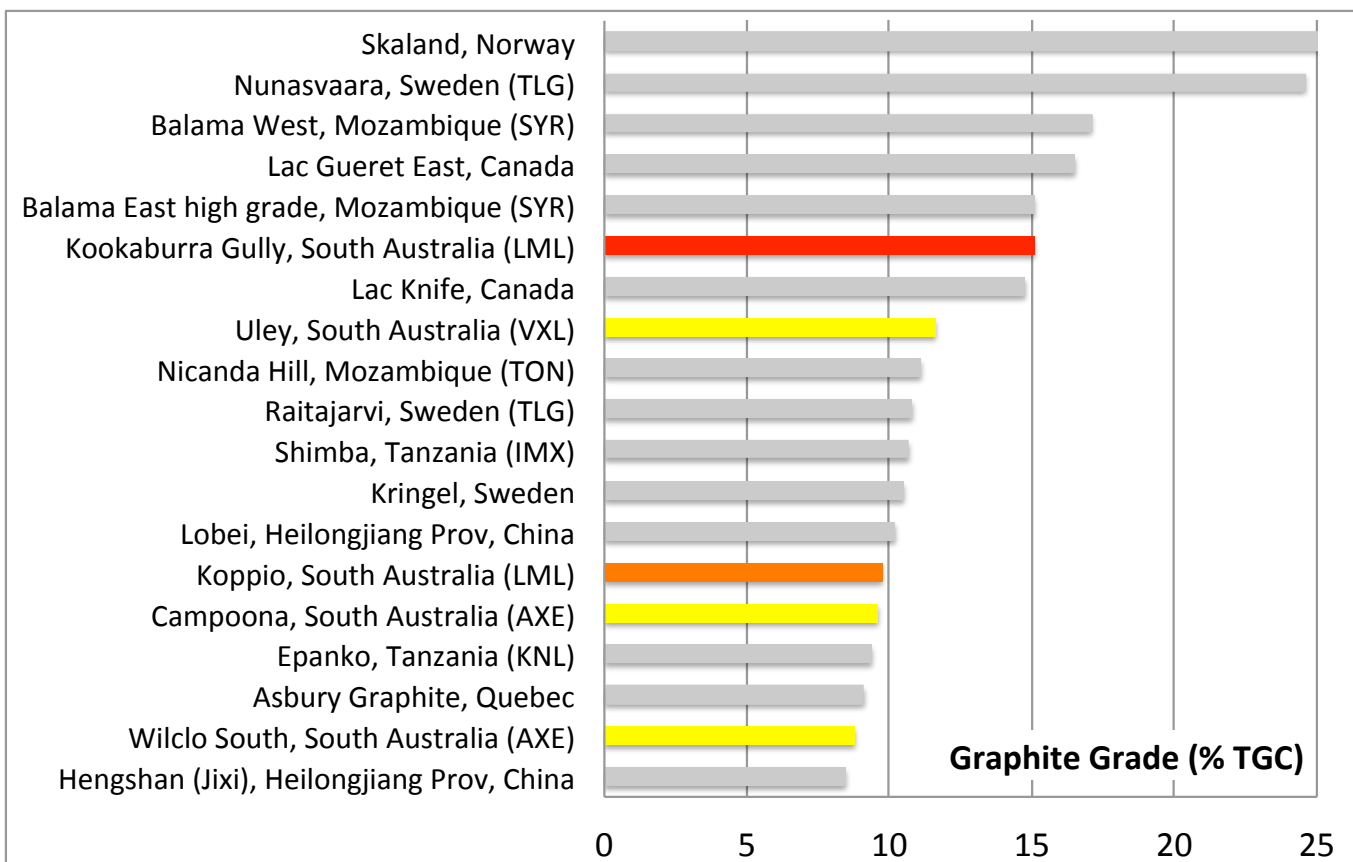
Total contained graphite 567,000 t  
(at 2% TGC cutoff)

Potential for substantial ore extension

# Top grades in world's top class



Kookaburra Gully is **Australia's highest grade graphite deposit** and is capable of delivering near-term production at low cost in addition to graphene development research with Melbourne's Monash University and Guangdong University of Technology in China



*"Kookaburra Gully is within the Top 10 global resources including China based on graphite grade."*

TGC = Total Graphitic Carbon



# Kookaburra Gully Mining Lease

**Mining Lease offer**  
from SA Government

**Imminent**

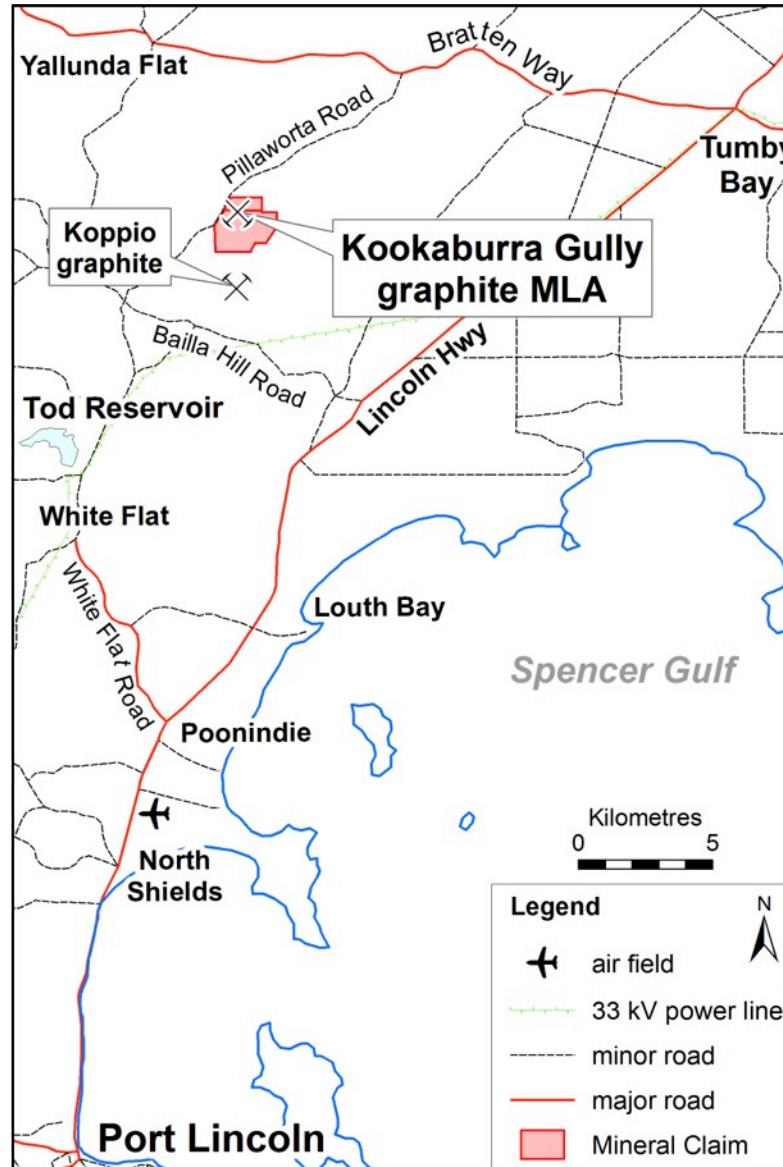
Existing  
Commonwealth  
Government EPBC  
environmental  
approval

**Not a Controlled  
Action**

**Targeting Maiden  
Production**

**Early-mid 2017**

*(subject to Govt approvals)*

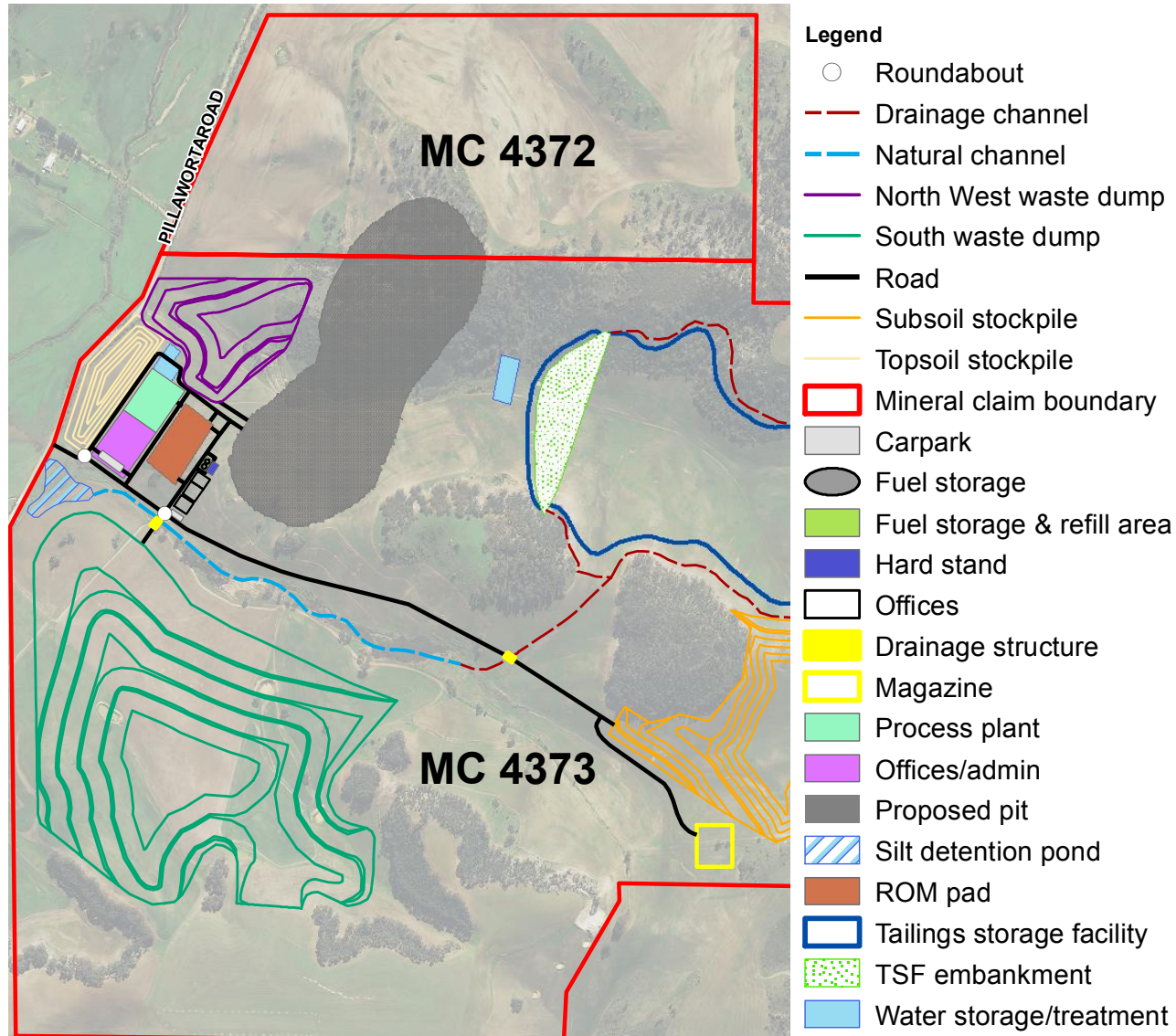


- Preparation of Program for Environmental Protection & Rehabilitation (PEPR) & other Government approvals in progress
- Capex <A\$50 million
- LOM Opex A\$704/t concentrate (\*)
- Water: 10km from Tod Reservoir + pit dewater
- Power: 5km from grid & onsite generation
- Export from Port Lincoln (35km) or Port Adelaide

*(\*) 90% recovery & includes transport to Port Adelaide*

# Kookaburra Gully Mining Lease

- Small mine site footprint 103 ha
- 700m long open pit graphite mine
- Conventional 4-stage flotation plant 24/7
- Process 250,000 tpa ore
- Up to 40,000 tpa concentrate
- High metal recovery (>80%)
- Delivers high grade (94-98% TGC) concentrate
- Chemical leaching to 99.95% TGC
- Packaging – bulka bags or containers



# Timescale to Production





# Kookaburra Gully

## Robust Project Economics

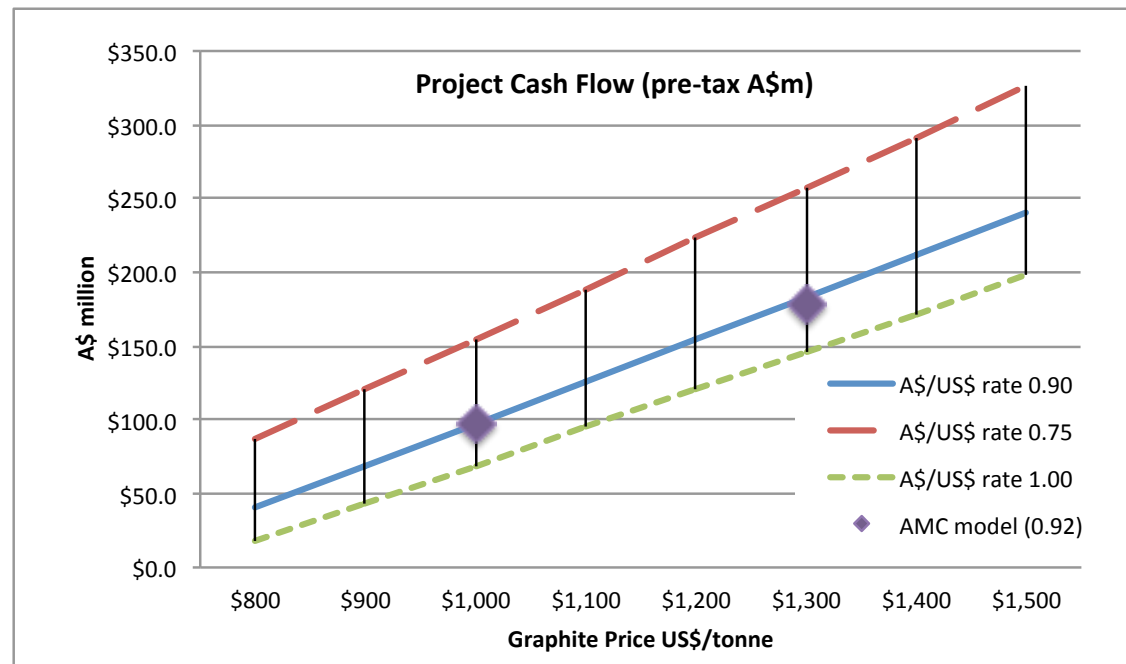


*Low capital investment less than \$50 million and competitive cash operating costs*

Scenario	Graphite Price (A\$/t conc)	Life (yrs)	Production				Operating Cost (\$/t conc)
			Plant feed	Feed %TGC	Concentrate	Conc %TGC	
Low revenue	\$1,077	6.2	1.55 Mt	15.7	233 kt	94.0	\$630
High revenue	\$1,382	7.2	1.80 Mt	15.4	256 kt	97.0	\$704

*AMC Conceptual Mine Plan  
(based on 2012-13 prices)*

**2015 graphite price range  
for Kookaburra Gully  
concentrate (A\$/US\$ = 0.75):  
A\$1,000 to A\$ 1,500 /tonne**





# Kookaburra Gully

## Capital Cost Estimate



*Total capital investment less than \$50 million*

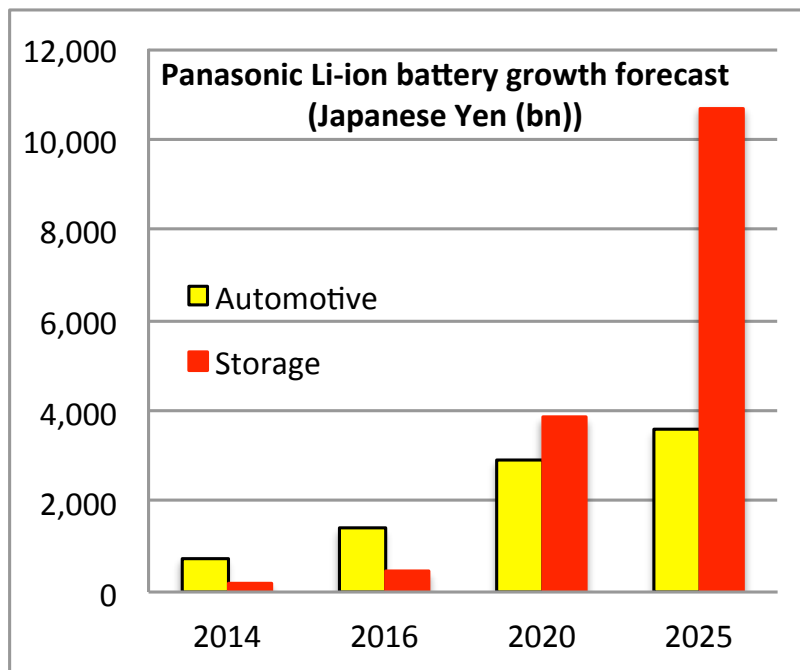
Description	2016 (\$m)	2017 (\$m)
PEPR ( <u>geotechnical, geochemical, surface and groundwater</u> , detailed design/DFS, management plans, government approvals)	3.2	
<b>Process Plant</b> (crusher, mill-flotation-screening circuit, drying-packaging circuit)		24.1
<b>Tailings Storage Facility</b>		2.8
<b>Infrastructure</b> (offices, workshops, water supply-storage, generator, haul roads, ROM pad)		7.7
<b>EPCM</b> (15%)		5.2
<b>Contingencies</b> (10%)	0.3	3.5
<b>TOTAL CAPITAL COST ESTIMATE</b>	<b>3.5</b>	<b>43.3</b>

# Graphite Market Fundamentals



## BATTERY & ENERGY STORAGE COMMERCIALISATION

- Graphite is a key input in the manufacture of lithium-ion batteries
- Batteries widely used in **electric vehicles**, smart phones, portable computer devices and more – **battery backup for solar powered homes and grid-scale solar power storage and power generation**
- **Graphite foil** widely used in electrical applications and buildings
- Graphite is used in pencils, dry lubricants, steelmaking, pebble-bed nuclear reactors, solar energy, reinforcements in plastics and much more



***Automotive battery demand  
to grow by at least 15%***

***Storage battery demand  
to grow by 75% from 2017***

# Focused Board and Management



## Board Snapshot

**Non-Executive Chairman - Mr Jin Yubo**

**Managing Director - Dr Allan John Parker**

**Non-Executive Director - Mr Eddie Lung Yiu Pang**

**Non-Executive Director - Mr James Tenghui Zhang**

- **Mr Jin and Mr Zhang** provide crucial support at a time when funding will be vital for development of the Company's graphite mining opportunities
- **Dr Parker and Mr Pang** provide crucial mine development, geotechnical and government approvals experience and knowledge
- **Mr Jin** instrumental in establishing partnerships in Chinese graphite trading and graphene commercialisation



*97.8% TGC coarse flake graphite  
from Kookaburra Gully*

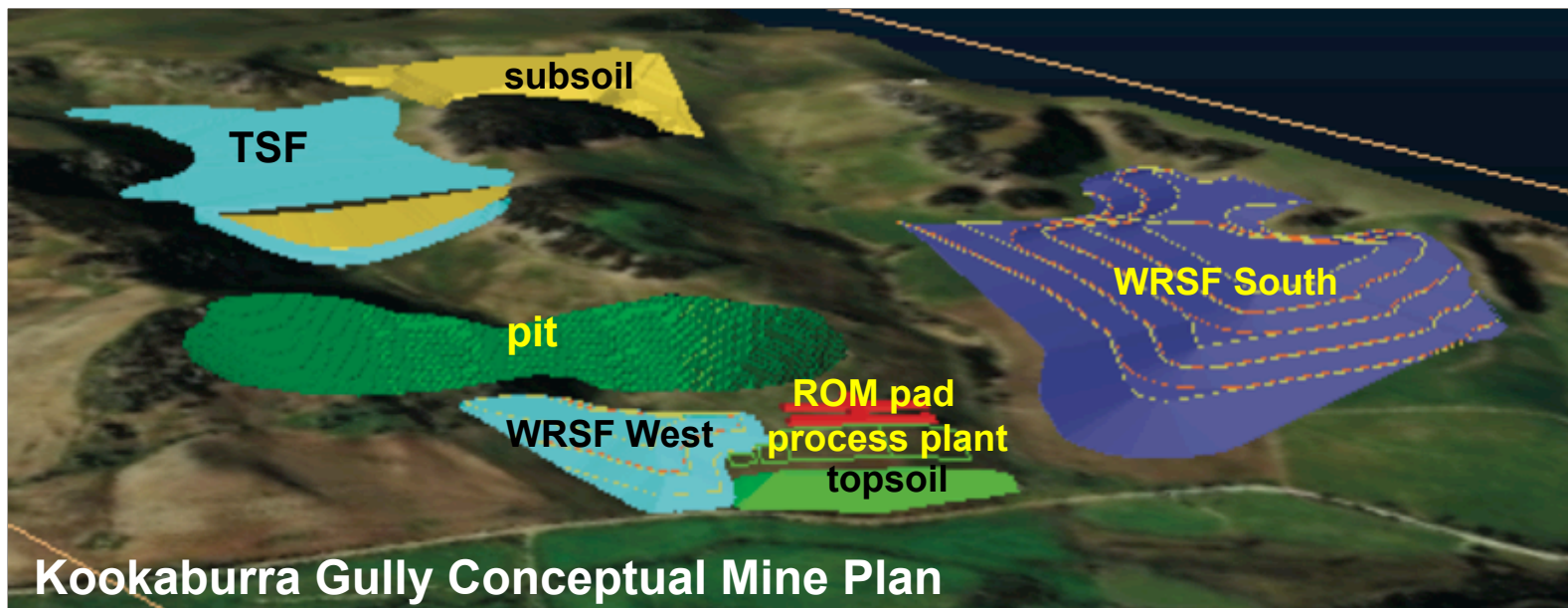
<b>ASX Code</b>	LML
<b>Market Capitalisation</b>	A\$10.7 million
<b>Shares on issue</b>	268.4 million
<b>52 Week range</b>	0.03 – 0.06 cents
<b>Cash at 31 December 2015</b>	A\$0.97 million
<b>Debt</b>	NIL

# Summary and Key Deliverables



- **Focused graphite developer** with Australia's highest quality graphite deposit
- **Milestone Mining Lease imminent for Kookaburra Gully**
  - Crystallises offtake/project funding opportunities
  - **Australia's next graphite mine** (subject to government approvals and finance)
- **World class high-grade graphite deposit**
  - High purity concentrates up to 98% TGC produced by conventional flotation
  - Readily upgraded to 99.9% TGC
  - Located in recognised **mining friendly jurisdiction** in close proximity to necessary infrastructure (water, power, transport and shipping)
  - Low capital investment and estimated operating costs
- **Near-term production as soon as next year**
- **Direct exposure to graphite and graphite market opportunity**
  - 25% foundation shareholder in new international graphite trading platform





**THANK YOU**

**Dr. A. John Parker**

**Managing Director  
LINCOLN MINERALS LIMITED**

**+61 8 8274 0243**

**[jparker@lincolnminerals.com.au](mailto:jparker@lincolnminerals.com.au)**



# Important Notice



This presentation has been prepared by Lincoln Minerals Limited ("LML") and Australian Graphite Pty Ltd ("AGL") as an aid to a spoken explanation. It should not be considered as an offer or invitation to subscribe for or purchase any securities in LML or AGL nor as an inducement to make an offer or invitation with respect to those securities. AGL is a wholly-owned subsidiary of LML; all rights and interests in graphite minerals and associated minerals in certain tenements are assigned to AGL. Information in this presentation is a professional opinion only but is given in good faith.

## **Forward-Looking Statements**

This presentation contains forward looking statements concerning the Kookaburra Gully Graphite Project. Statements concerning Mineral Resources, mine plans and project economics may be deemed to be forward looking statements in that they involve estimates based on specific assumptions. Forward-looking statements are not statements of historical fact, and actual events and results may differ materially from those described in the statements as a result of a variety of risks, uncertainties and other factors. Forward looking statements are based on AGL's and LML's beliefs, opinions and estimates as of the date the statements are made and no obligation is assumed to update forward looking statements if these beliefs, opinions and estimates should change or to reflect other future developments. Data and amounts shown in this presentation relating to capital costs, operating costs, graphite prices and project timelines are based on consultant reports and internally generated estimates and are best estimates only. Accordingly, AGL and LML cannot guarantee the accuracy and/or completeness of the figures or data included in the presentation. All dollar amounts are in Australian dollars unless otherwise stated.

## **Competent Person's Statement**

Information in this presentation that relates to exploration activity, mineral resources and results was compiled by Dr A J Parker who is a Member of the Australasian Institute of Geoscientists. Dr. Parker is Managing Director of and has shares in Lincoln Minerals Limited. He has sufficient experience relevant to the styles of mineralisation and to the activities which are being presented to qualify as a Competent Person as defined by the JORC code, 2012. Dr. Parker consents to the release of the information compiled in this presentation in the form and context in which it appears.



# Appendix

This presentation has been prepared by Lincoln Minerals Limited ("LML") as an aid to a spoken explanation. The information contained in this presentation is based on a number of public statements, Quarterly Reports and ASX releases made by LML:

## References

- Lincoln Minerals, 2013. Updated Graphite Mineral Resources for Lincoln's world-class Kookaburra Gully project in South Australia's Eyre Peninsula. *Lincoln Minerals Limited, ASX Announcement* 19 December 2013.
- Lincoln Minerals, 2015. Maiden graphite resource for second Lincoln deposit in SA's Eyre Peninsula lifts total inventory by >50% in this world-class province. *Lincoln Minerals limited, ASX Announcement* 13 July 2015.
- Australian Graphite Limited, 2015. Community Information Update No.4, Kookaburra Gully Graphite Mine, Mining Lease Proposal. *Lincoln Minerals Limited website, September 2015*
- Lincoln Minerals, 2015. 2014-2015 Annual Report. *Lincoln Minerals Limited October 2015.*

*Information extracted from previously published reports identified in this report is available to view on the Company's website [www.lincolnminerals.com.au](http://www.lincolnminerals.com.au). The company confirms that it is not aware of any new information or data that materially affects the information included in the original market announcements and, in the case of estimates of Mineral Resources, that all material assumptions and technical parameters underpinning the estimates in the relevant market announcements continue to apply and have not materially changed. The company confirms that the form and context in which the Competent Person's findings are presented have not been materially modified from the original market announcements.*



# Kookaburra Gully Mineral Resource

**Table 1. Kookaburra Gully Mineral Resource at a nominal 5% TGC lower cut-off grade**

Mineral Resource Classification	Tonnage (Mt)	Average Grade (% TGC)	Contained Graphite (tonnes)	Density (g/cc)
Indicated	1.47	13.9	204,352	2.57
Inferred	0.73	17.3	127,425	2.52
<b>TOTAL (&gt;5% TGC)</b>	<b>2.20</b>	<b>15.1</b>	<b>331,778</b>	<b>2.55</b>

*Mt = million tonnes    TGC = Total Graphitic Carbon*

**Table 2. Kookaburra Gully Mineral Resource at a nominal 2% TGC lower cut-off grade**

Mineral Resource Classification	Tonnage (Mt)	Average Grade (% TGC)	Contained Graphite (tonnes)	Density (g/cc)
Indicated	2.10	10.6	223,349	2.56
Inferred	1.13	12.2	137,370	2.52
<b>TOTAL (&gt;2% TGC)</b>	<b>3.23</b>	<b>11.2</b>	<b>360,719</b>	<b>2.54</b>

*Mt = million tonnes    TGC = Total Graphitic Carbon*

## Reference

Lincoln Minerals, 2013. Updated Mineral Resources and Metallurgy for Lincoln's world-class Kookaburra Gully project in South Australia's Eyre Peninsula. *Lincoln Minerals Limited, ASX Announcement* December 2013.





# Koppio Mineral Resource

Table 2. Total combined Mineral Resources for Koppio and Kookaburra Gully

Mineral Resource Classification	Cutoff Grade (% TGC)	Tonnage (Mt)	Average Grade (% TGC)	Contained Graphite (tonnes)	Density (g/cc)
<b>Koppio</b>					
High-grade Core (Domain 1) – Inferred	5%	1.85	9.76	180,733	2.67
Low-grade Halo (Domain 2) – Inferred	2%	1.21	3.18	38,560	2.80
<b>Kookaburra Gully</b>					
High-grade Core (Domain 1) - Indicated	5%	1.45	13.74	199,193	2.56
Low-grade Halo (Domain 2) – Indicated	2%	0.62	3.04	18,984	2.54
High-grade Core (Domain 1) – Inferred	5%	0.73	16.17	117,964	2.50
Low-grade Halo (Domain 2) – Inferred	2%	0.40	2.91	11,538	2.54
<b>TOTAL (&gt;2% TGC)</b>		<b>6.26</b>	<b>9.05</b>	<b>566,972</b>	<b>2.63</b>

*Mt = million tonnes TGC = Total Graphitic Carbon*

## Reference:

Lincoln Minerals, 2015. Maiden graphite resource for second Lincoln deposit in SA's Eyre Peninsula lifts total inventory by >50% in this world-class province. *Lincoln Minerals limited, ASX Announcement* 13 July 2015.

# Kookaburra Gully Graphite Deposit

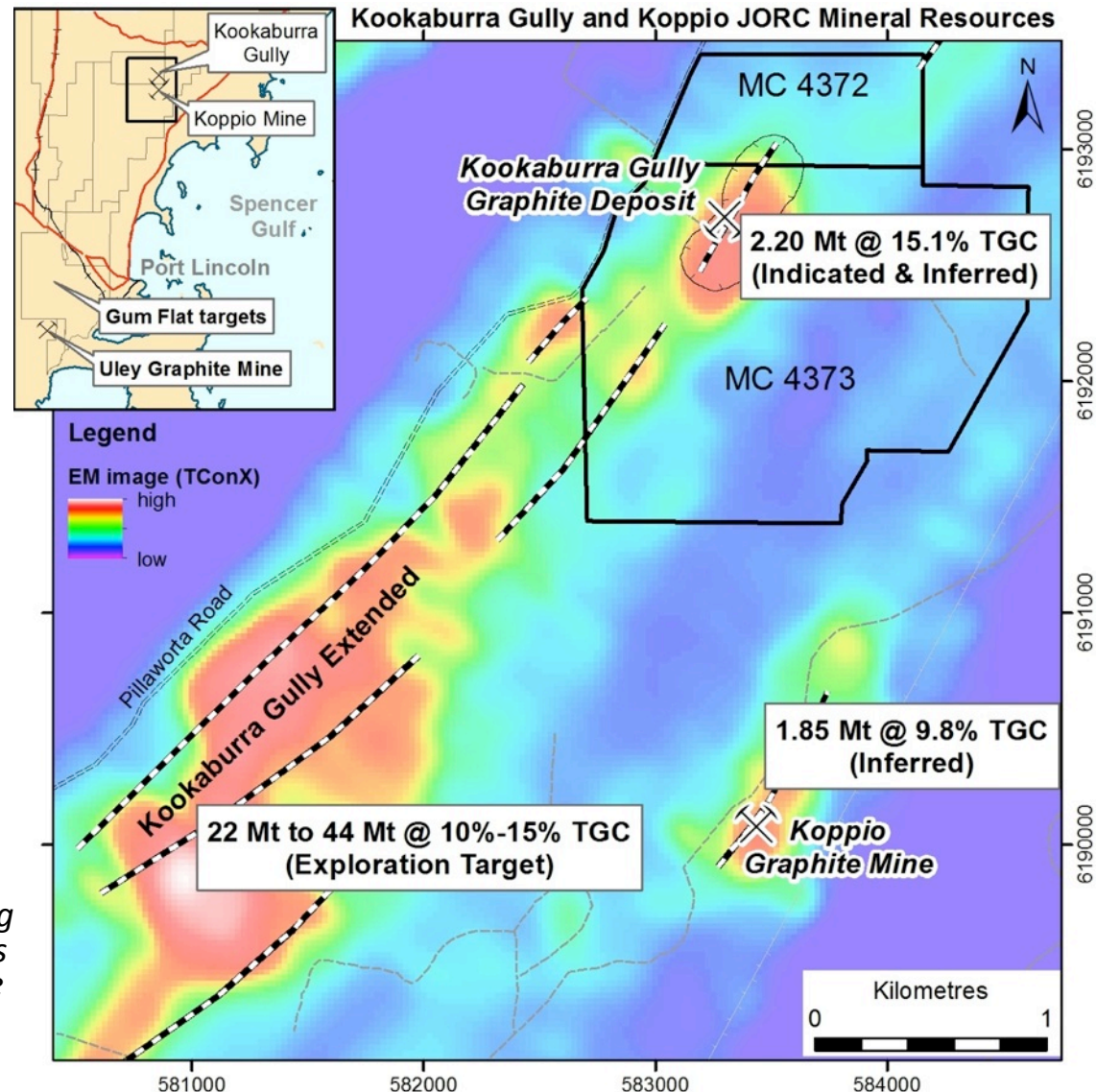
## World Class Resource and Resource Upside

### JORC Mineral Resources:

- Kookaburra Gully  
2.20 Mt @ 15.1% TGC
- Koppio  
1.85 Mt @ 9.8% TGC
- Total Contained Graphite  
567,000 tonnes
- Kookaburra Gully Extended  
Exploration Targets  
22 Mt – 44 Mt @ 10%-15% TGC
- Other Exploration Targets:  
Gum Flat, Uley, Sleaford, Pernella  
& Yellow Gums

### Long Project Mine Life and Enhanced Production Rate

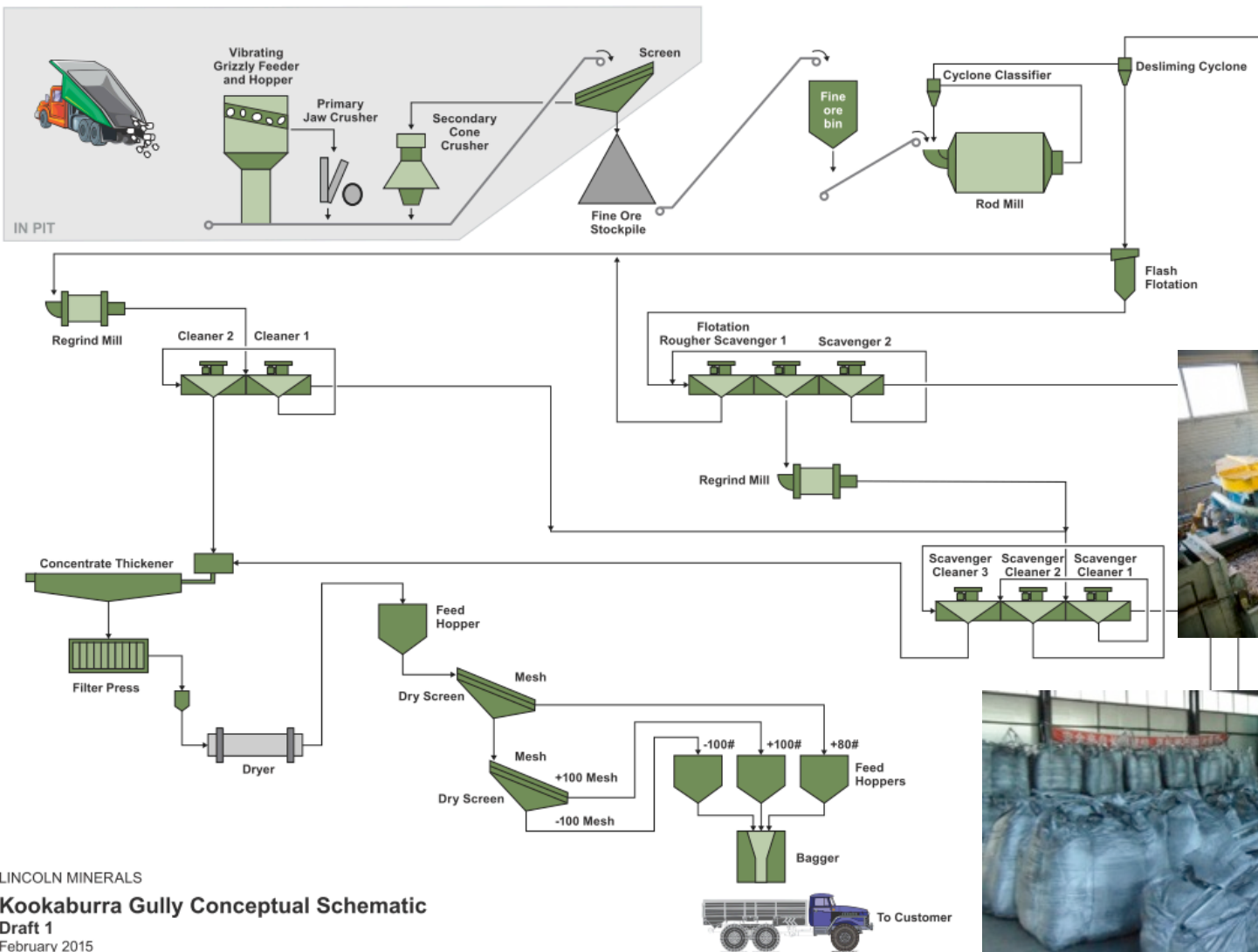
*It is emphasised that Exploration Target tonnage estimates are entirely conceptual in nature. There has been insufficient or no drilling in the immediate areas of those targets and it is uncertain if further exploration will result in the estimation of a Mineral Resource.*



# Kookaburra Gully – Simple Processing



Simple process flow sheet – grind, float, regrind, clean, dry, screen and export



LINCOLN MINERALS  
Kookaburra Gully Conceptual Schematic  
Draft 1  
February 2015

# Corporate Directory



## **Directors**

Mr Jin Yubo, Chairman

Dr A John Parker, Managing Director

Mr Eddie Lung Yiu Pang, Non Executive

Mr James Tenghui Zhang

## **Company Secretary**

Jaroslav (Jarek) Kopias

## **Registered and Principle Office**

Suite 4, Level 7, 350 Collins Street

Melbourne Victoria 3000

Phone: (613) 9600 0782

Facsimile: (613) 9600 0783

Email: [info@lincolnminerals.com.au](mailto:info@lincolnminerals.com.au)

Website: [www.lincolnminerals.com.au](http://www.lincolnminerals.com.au)

## **Adelaide Office**

28 Greenhill Road

Wayville SA 5034

Phone: (618) 8274 0243

## **Share Registry**

Computershare Investor Services Pty Ltd

Level 5, 115 Grenfell Street

Adelaide SA 5000

Phone 1300 365 998

## **Banker**

National Australia Bank

## **Auditor**

Grant Thornton

## **ASX code LML**

**ABN** 50 050 117 023