

# **Building a World-Class Graphite Project**

*2015 AGM Managing Director's Presentation*

**LINCOLN MINERALS LIMITED**

**ASX : LML**

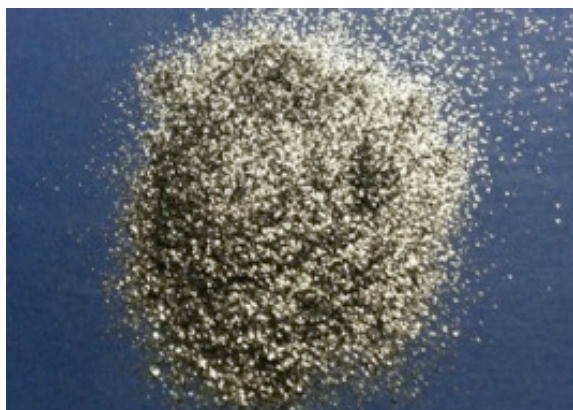
**[www.lincolnminerals.com.au](http://www.lincolnminerals.com.au)**

Kookaburra Gully Trench 4  
12m @ 20.5% graphitic carbon

# Corporate Snapshot



- A **focused emerging graphite producer** with key projects on SA's Eyre Peninsula – a proven world-class flake graphite province
- Mining lease application being processed by SA Government for the flagship **Kookaburra Gully Graphite Project**, 35km north of Port Lincoln, South Australia
- Targeting **maiden graphite production** and sales of high purity (>94% TGC) concentrate in **2016-17**



*97.8% TGC coarse flake graphite concentrate from Kookaburra Gully*

ASX Code	LML
Market Capitalisation	A\$10.5 million
Shares on issue	268.4 million
52 Week range	0.03 – 0.06 cents
Cash at 30 September 2015	A\$0.44 million
Debt	NIL
Sale of Barns Estate property (December 2015) ensures funding available for next 6-9 months	

## Board Snapshot

Non-Executive Chairman - Mr Jin Yubo  
Managing Director - Dr Allan John Parker  
Non-Executive Director - Mr Eddie Lung Yiu Pang

# Investment Case

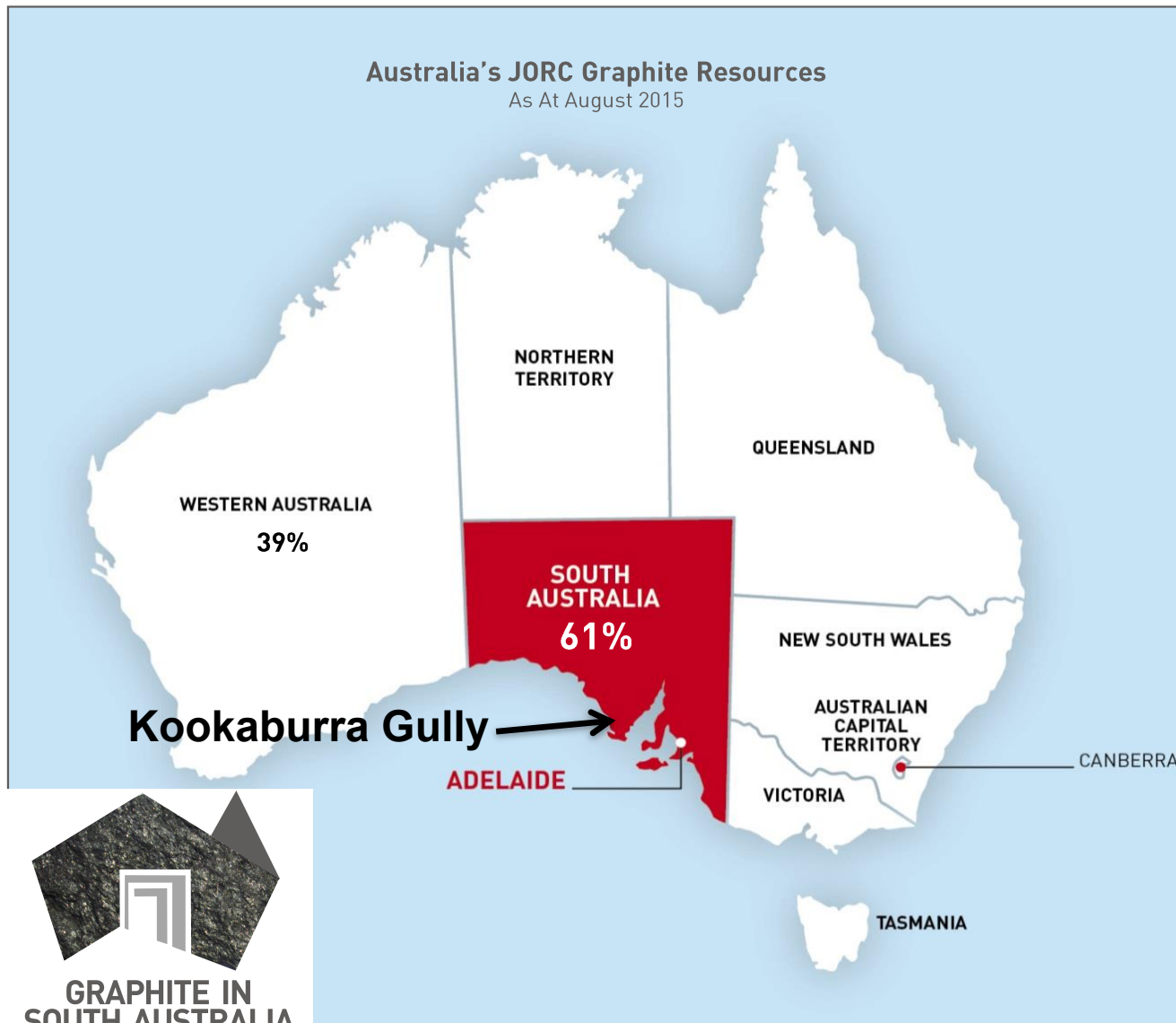
- **Focused graphite developer** with Australia's highest quality graphite deposit
- Flagship assets **ideally located in close proximity to necessary infrastructure**
- Flagship **Kookaburra Gully Graphite Project**
  - Very **high-grade deposit** ranked in the world's top 10 highest graphite grade resources
  - High purity levels of up to **98% TGC** easily produced by conventional flotation
  - **Substantial resource** located in recognised mining friendly jurisdiction
- **Near-term production – 2016-17**
  - Mining Lease in early 2016 (subject to government approvals)
  - Low capital investment and estimated operating costs
- Additional high grade graphite resource at historic **Koppio Graphite Mine** and upside at Kookaburra Extended and Gum Flat
- **PACE program** for drilling large Kookaburra Extended graphite target in early 2016
- **Direct exposure to graphite and graphite market opportunity**
  - Foundation shareholder in international graphite trading platform headquartered in one of world's most active graphite trading ports



# World Class Graphite Assets



Australia's JORC Graphite Resources  
As At August 2015



South Australia is home to 61% of Australia's JORC graphite resources including Lincoln's world-class Kookaburra Gully deposit

SA's Eyre Peninsula is highly prospective for further world-class discoveries

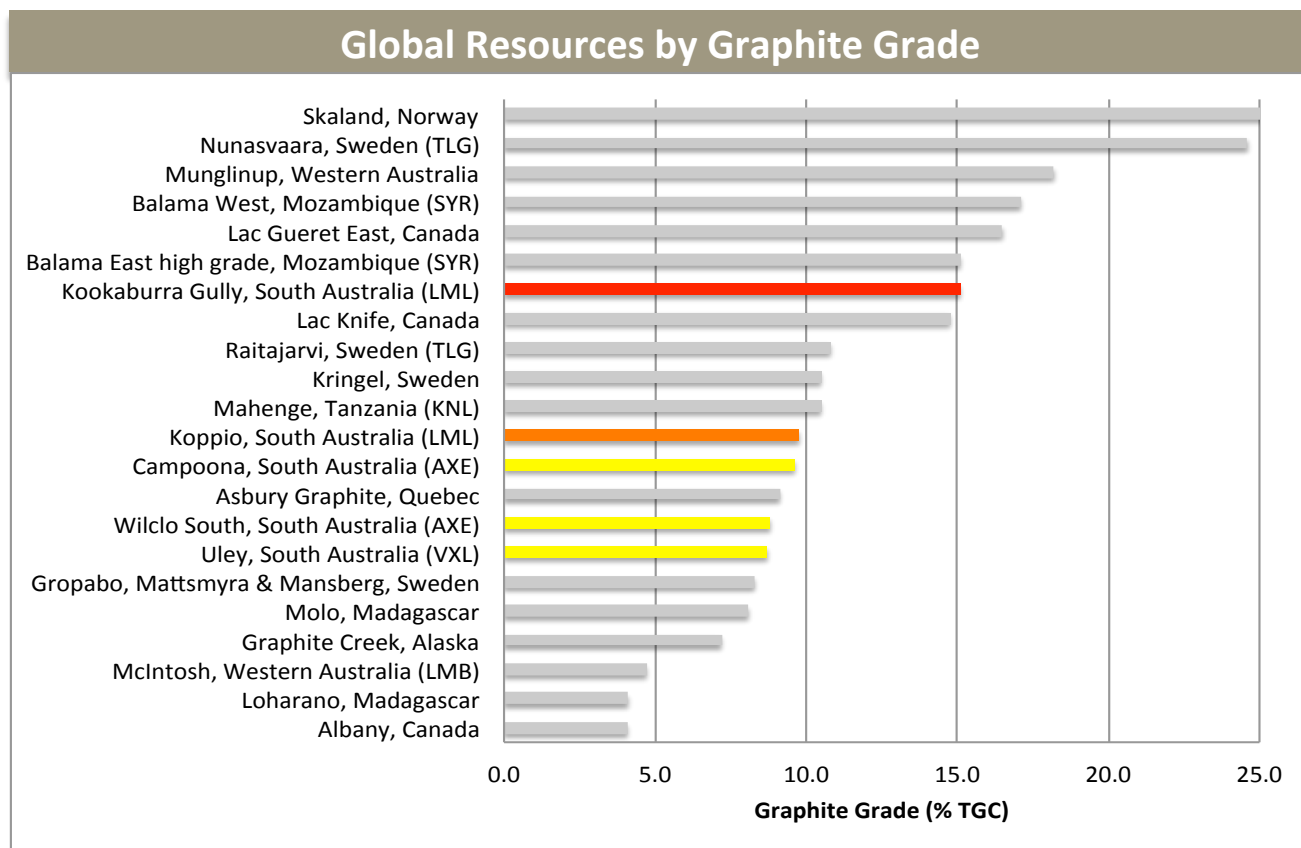
South Australia – ranked in top 20 as world's most attractive destination for mining investment by Fraser Institute

# Kookaburra Gully

## High-grade high-quality graphite resource

Flake graphite JORC Mineral Resource:

- **2.2 Mt Indicated and Inferred at 15.1% TGC (5% TGC cutoff)**
- or 3.16 Mt Indicated and Inferred at 11.5% TGC (2% TGC cutoff)



*“Kookaburra Gully is within the Top 10 global resources based on graphite grade and is capable of delivering near-term production at low cost.”*

TGC = Total Graphitic Carbon

# Graphite Market Fundamentals

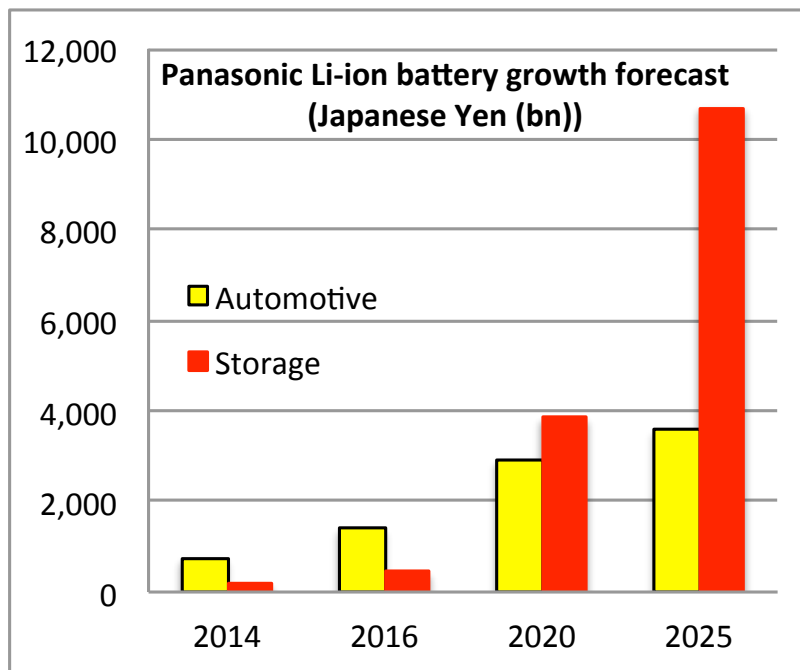


## BATTERY & ENERGY STORAGE COMMERCIALISATION

- Graphite is a key input in the manufacture of lithium-ion batteries
- Batteries widely used in **electric vehicles**, smart phones, portable computer devices and more – **battery backup for solar powered homes and grid-scale solar power storage and power generation**

## WIDESPREAD INDUSTRIAL APPLICATIONS

- Graphite is used in pencils, dry lubricants, steelmaking, pebble-bed nuclear reactors, solar energy, reinforcements in plastics and much more



***Automotive battery demand  
to grow by at least 15%***

***Storage battery demand  
to grow by 75% from 2017***

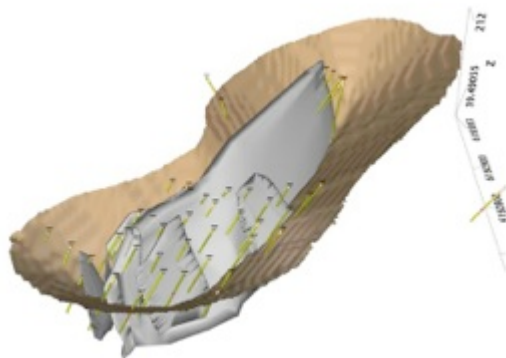
# Kookaburra Gully – Low Impact Mine Plan



- Small open pit & process plant (cf Uley Graphite Mine) = **small environmental footprint (103 Ha)**
- Process 250,000 tonnes per annum (tpa) ore
- Produce up to 40,000tpa of high grade (93-98% TGC) graphite concentrate

## Realisable infrastructure solutions

- Water – pipeline from Tod Reservoir (10 km) + mains water for final product cleaning
- Power – onsite generation and/or grid (ca. 5km from 33 kV transmission line) (2-4 MW)
- Transport to Port Lincoln (35km) in bulka bags or in containers to Port Adelaide for shipping



Lincoln Minerals Limited



Emerging Graphite Producer



# Kookaburra Gully Mining Lease Application

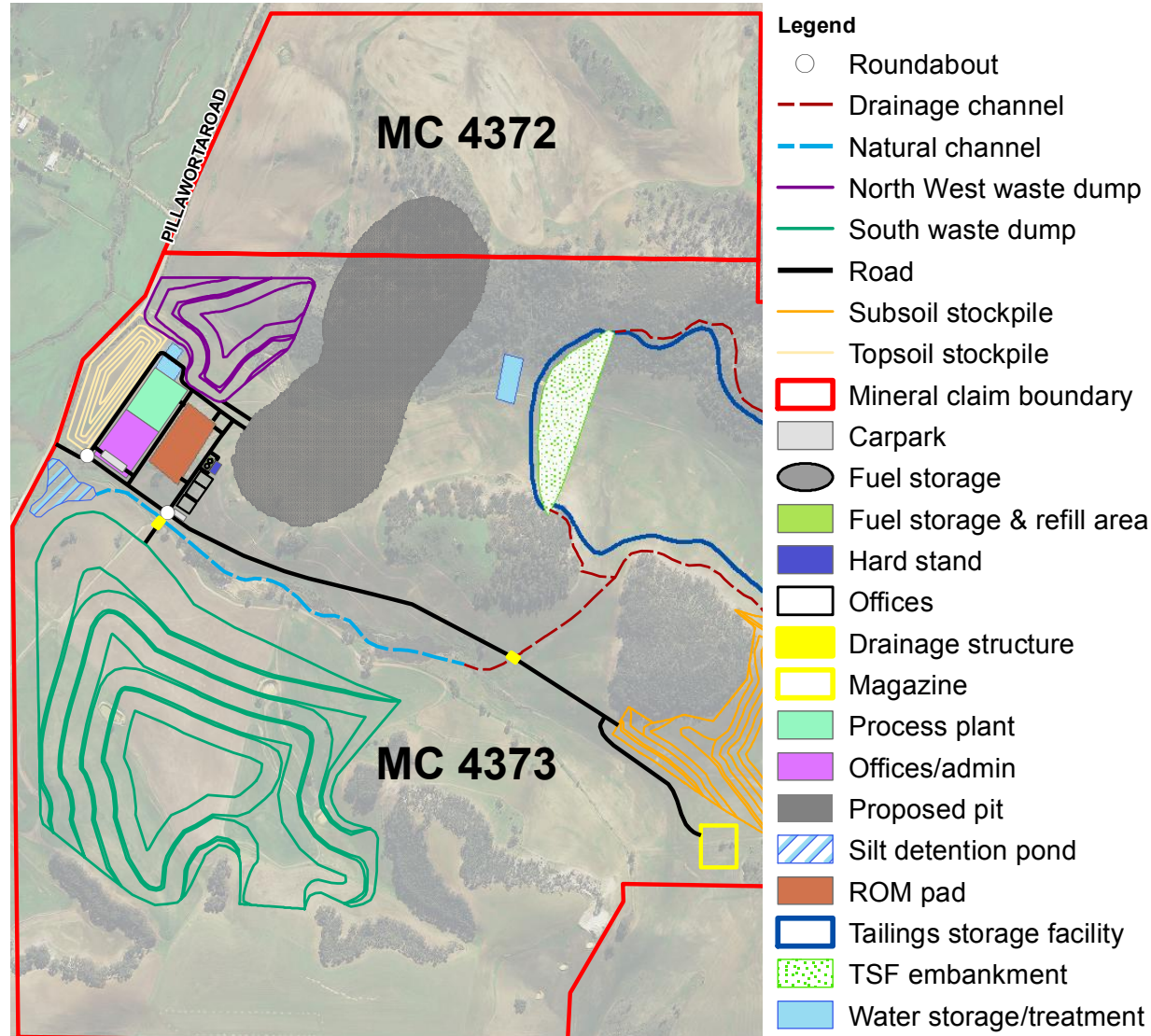


## Progress

- Mineral Claims registered November 2014
- MLP lodged February 2015
- EPBC Referral lodged April 2015
- Revised MLP lodged May 2015
- Government & public assessment period – September-October 2015
- Response document in preparation – to be lodged December 2015

**Mining Lease offer  
early 2016**

(subject to Govt approvals)





# Kookaburra Gully

## Robust Project Economics



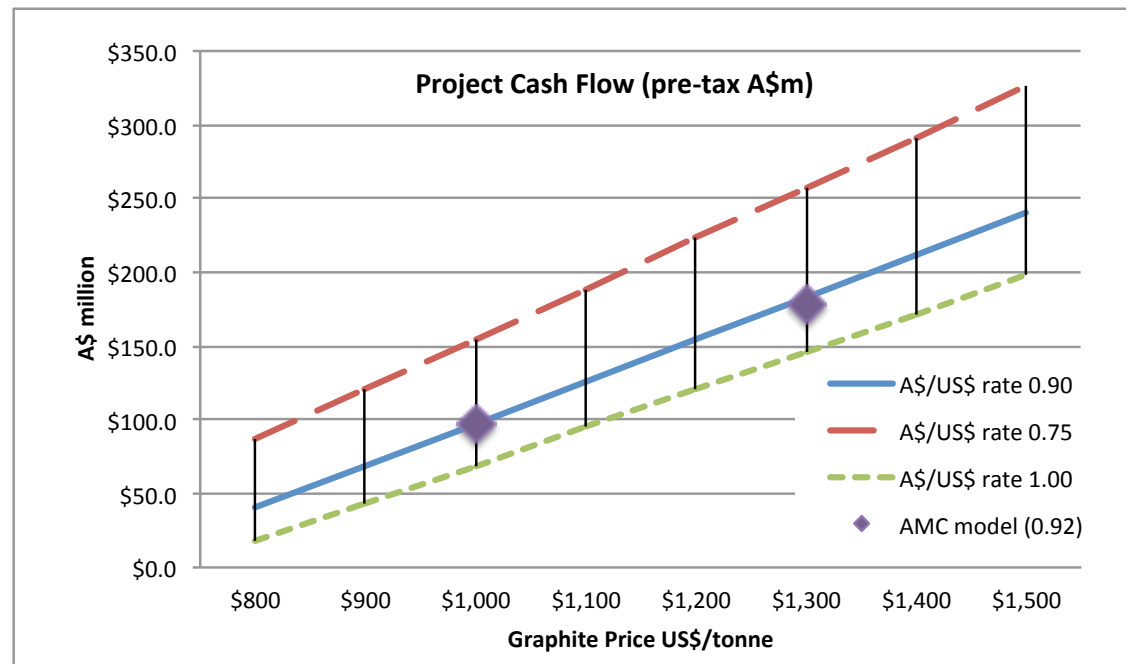
*Low capital investment less than \$50 million and competitive cash operating costs*

Scenario	Graphite Price (A\$/t conc)	Life (yrs)	Production				Operating Cost (\$/t conc)
			Plant feed	Feed %TGC	Concentrate	Conc %TGC	
Low revenue	\$1,077	6.2	1.55 Mt	15.7	233 kt	94.0	\$630
High revenue	\$1,382	7.2	1.80 Mt	15.4	256 kt	97.0	\$704

AMC Conceptual Mine Plan  
(based on 2012-13 prices)

**2015 graphite price range  
for Kookaburra Gully  
concentrate (A\$/US\$ = 0.75):  
A\$1,000 to A\$ 1,500 /tonne**

South Australia offers a competitive  
graphite royalty scheme – 2% for  
the first 5 years, 3.5% thereafter

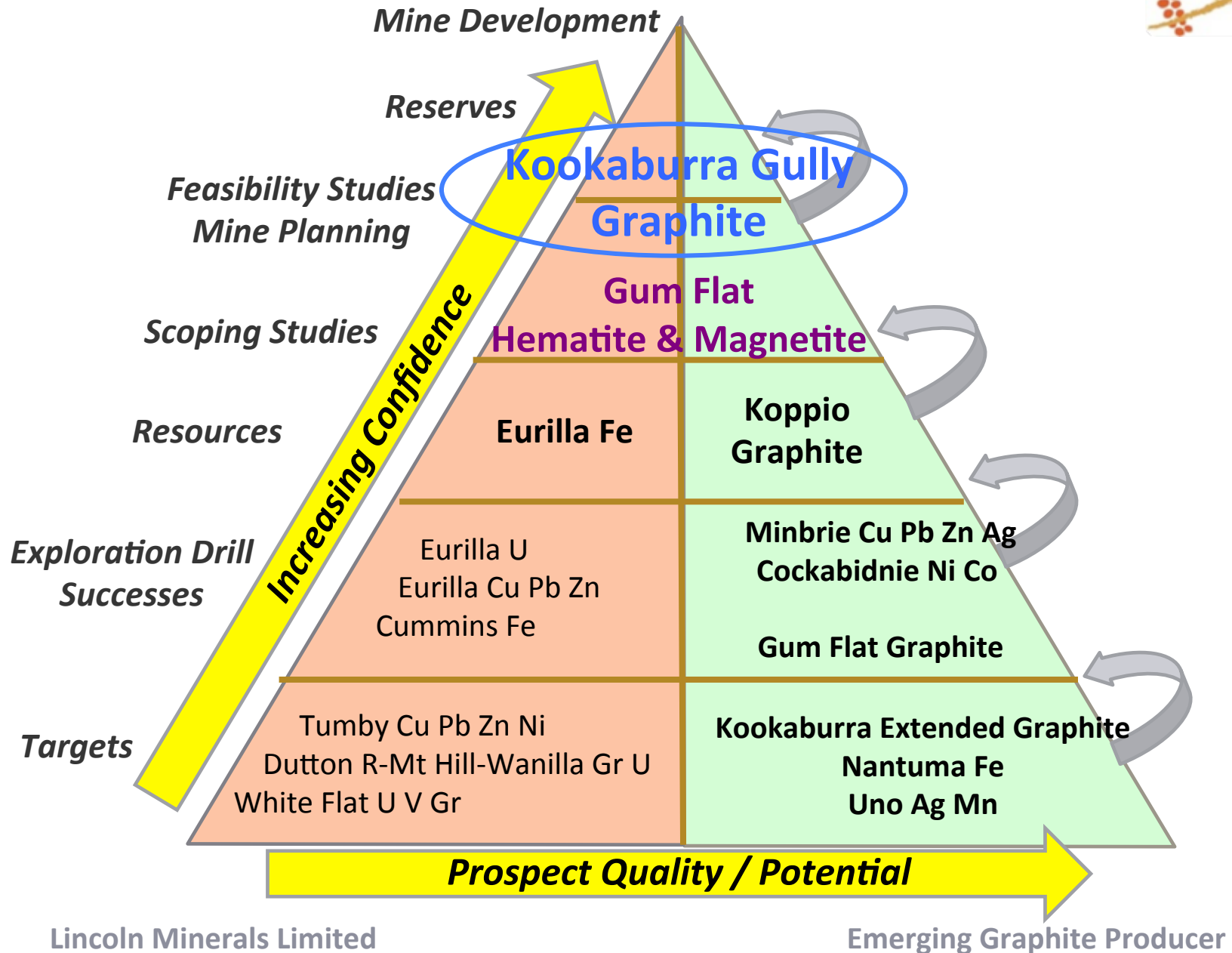


# Upside – world-class graphite potential



Project	Current Status	2015- 2016
<b>KOOKABURRA GULLY</b>	<ul style="list-style-type: none"> <li>Indicated &amp; Inferred JORC Mineral Resource</li> <li><b>2.2 Mt @ 15.1% TGC</b></li> <li>Scoping studies completed</li> <li>Mineral Claims pegged</li> <li><b>Mining Lease Application submitted Feb 2015</b></li> </ul>	<ul style="list-style-type: none"> <li>Pilot plant metallurgical studies</li> <li>Customer and market development</li> <li><b>Obtain ML &amp; approval to mine</b></li> <li><b>Develop &amp; commission mine &amp; process plant in 2016-17</b></li> </ul>
<b>KOPPIO GRAPHITE MINE</b>	<ul style="list-style-type: none"> <li>Historic mine</li> <li><b>1.85 Mt @ 9.8% TGC</b></li> <li>High grade mineralization up to 43% TGC over 500m strike length</li> </ul>	<ul style="list-style-type: none"> <li>Reconnaissance drilling 2014</li> <li>JORC Resource July 2015</li> <li>Metallurgical testing 2016-17</li> </ul>
<b>KOOKABURRA GULLY EXTENDED</b> (Immediate target)	<ul style="list-style-type: none"> <li>EM survey completed</li> <li>4.5km long EM anomaly</li> <li>Approval to drill received</li> </ul>	<ul style="list-style-type: none"> <li>Drilling &amp; JORC Resource 2016</li> <li>Large exploration target</li> <li><b>2015 PACE program grant</b></li> </ul>
<b>GUM FLAT-SLEAFORD</b> (Long-term target)	<ul style="list-style-type: none"> <li>Adjacent Uley Graphite Mine</li> </ul>	<ul style="list-style-type: none"> <li>Exploration targeted 2016-17</li> </ul>

# Other Projects



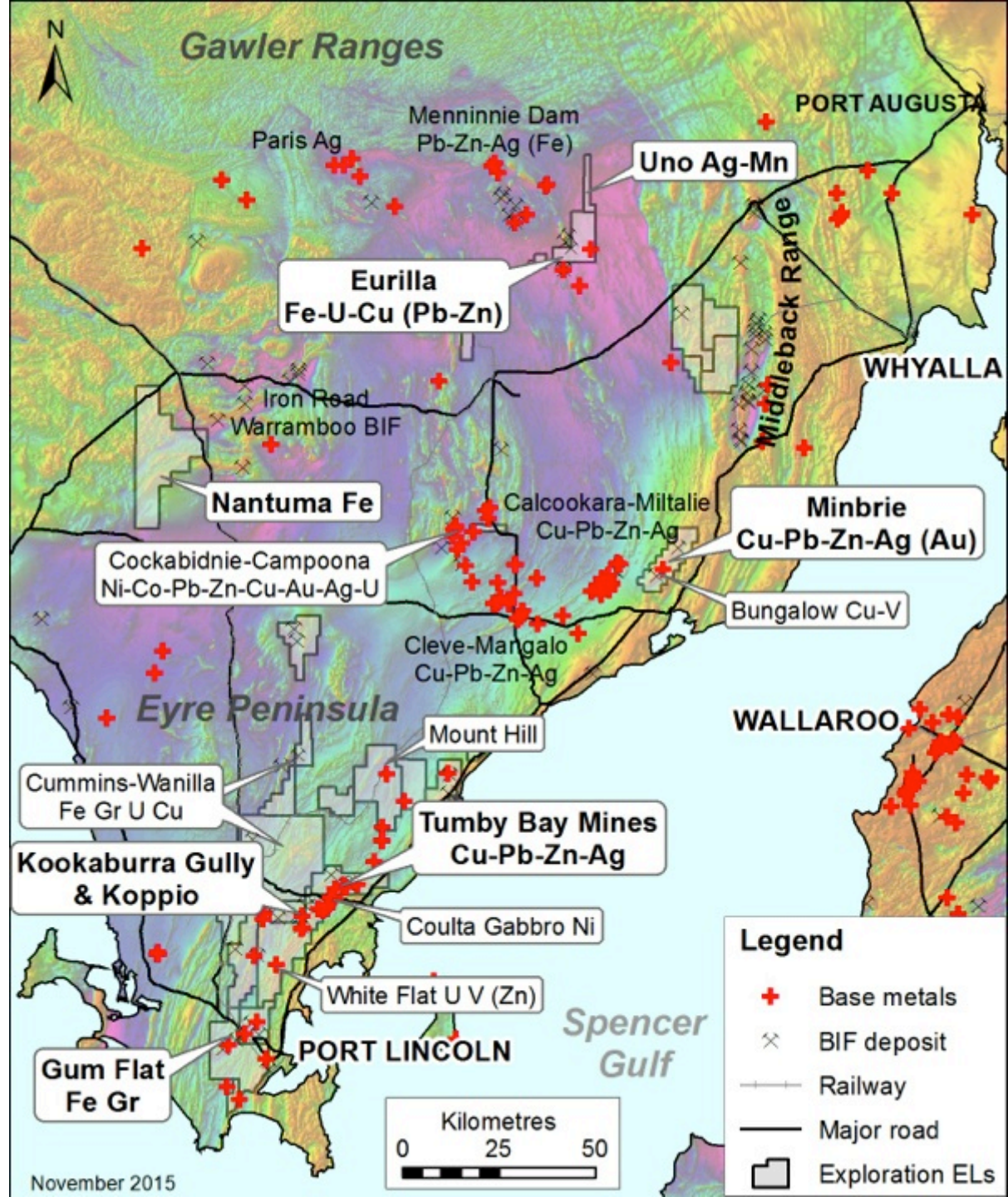


## Base metal potential

- Historical mining on Eyre Peninsula for copper, lead and silver goes back to the mid-1800s
  - Tumby Bay region
  - Minbrie-Cleve-Cockabidnie region
- Significant new discoveries include Menninnie Dam (lead-zinc), Paris (silver) and **Minbrie (copper-lead-zinc)**
- Proven copper-lead-zinc, uranium, nickel-cobalt, vanadium, manganese & silver

**Lincoln Minerals has several strategic copper targets for exploration in 2016**

Lincoln Minerals Limited

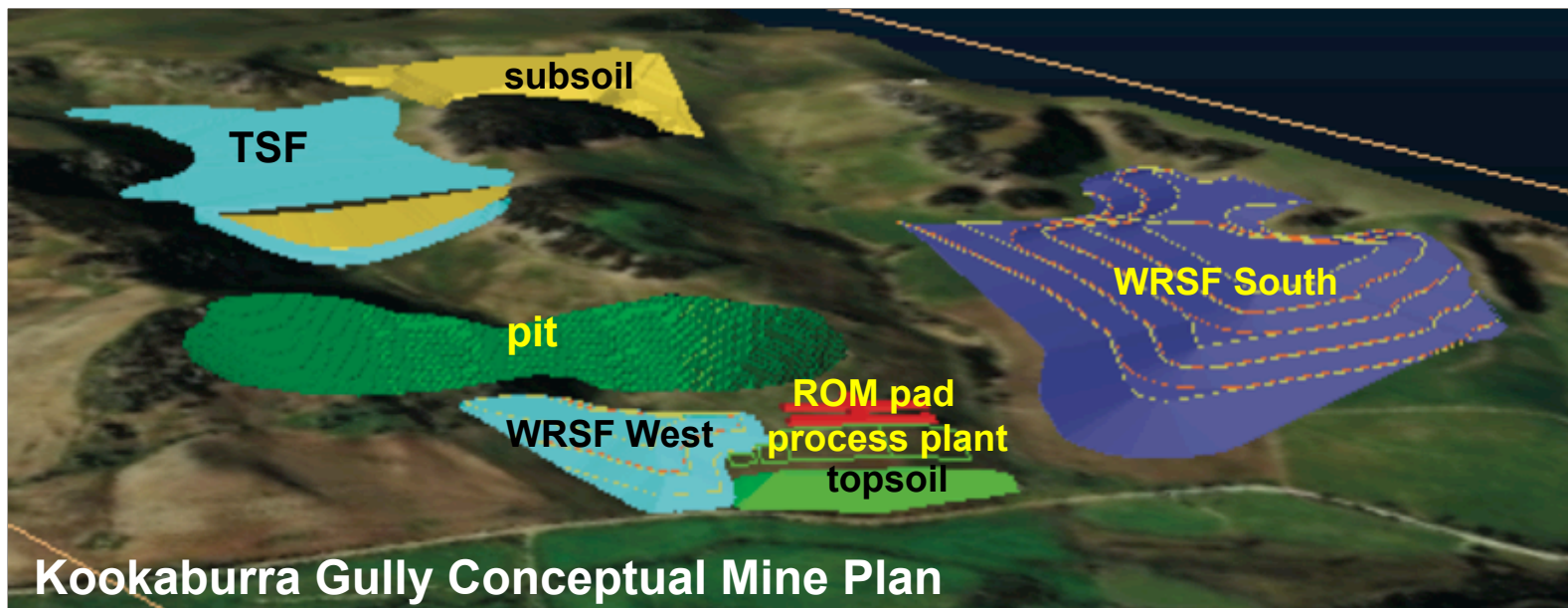




# Summary



- **Focused graphite company** with Australia's highest quality graphite deposit
- Flagship **Kookaburra Gully Graphite Project**
  - Very **high-grade deposit** ranked in the world's top 10 highest graphite grade resources
  - High purity levels of up to **98% TGC** easily produced by conventional flotation
  - Located in **close proximity to necessary infrastructure**
  - **Substantial resource** in recognised mining friendly jurisdiction
- **Near-term production – 2016-17**
  - Mining Lease in early 2016 (subject to government approvals)
  - Low capital investment and estimated operating costs
- **Direct exposure to graphite and graphite market opportunity**
  - Foundation shareholder in international graphite trading platform headquartered in one of world's most active graphite trading ports
- **PACE program** for drilling large Kookaburra Extended graphite target in early 2016
- **Ongoing exploration program** for copper, gold, nickel, iron ore



**THANKYOU**

**Dr. A. John Parker**

**Managing Director  
LINCOLN MINERALS LIMITED**

**+61 8 8274 0243**

**[jparker@lincolnminerals.com.au](mailto:jparker@lincolnminerals.com.au)**



# Important Notice



This presentation has been prepared by Lincoln Minerals Limited ("LML") and Australian Graphite Pty Ltd ("AGL") as an aid to a spoken explanation. It should not be considered as an offer or invitation to subscribe for or purchase any securities in LML or AGL nor as an inducement to make an offer or invitation with respect to those securities. AGL is a wholly-owned subsidiary of LML; all rights and interests in graphite minerals and associated minerals in certain tenements are assigned to AGL. Information in this presentation is a professional opinion only but is given in good faith.

## **Forward-Looking Statements**

This presentation contains forward looking statements concerning the Kookaburra Gully Graphite Project. Statements concerning Mineral Resources, mine plans and project economics may be deemed to be forward looking statements in that they involve estimates based on specific assumptions. Forward-looking statements are not statements of historical fact, and actual events and results may differ materially from those described in the statements as a result of a variety of risks, uncertainties and other factors. Forward looking statements are based on AGL's and LML's beliefs, opinions and estimates as of the date the statements are made and no obligation is assumed to update forward looking statements if these beliefs, opinions and estimates should change or to reflect other future developments. Data and amounts shown in this presentation relating to capital costs, operating costs, graphite prices and project timelines are based on consultant reports and internally generated estimates and are best estimates only. Accordingly, AGL and LML cannot guarantee the accuracy and/or completeness of the figures or data included in the presentation. All dollar amounts are in Australian dollars unless otherwise stated.

## **Competent Person's Statement**

Information in this presentation that relates to exploration activity, mineral resources and results was compiled by Dr A J Parker who is a Member of the Australasian Institute of Geoscientists. Dr. Parker is Managing Director of and has shares in Lincoln Minerals Limited. He has sufficient experience relevant to the styles of mineralisation and to the activities which are being presented to qualify as a Competent Person as defined by the JORC code, 2012. Dr. Parker consents to the release of the information compiled in this presentation in the form and context in which it appears.



# Appendix

This presentation has been prepared by Lincoln Minerals Limited ("LML") as an aid to a spoken explanation. The information contained in this presentation is based on a number of public statements, Quarterly Reports and ASX releases made by LML:

## References

- Lincoln Minerals, 2013. Updated Graphite Mineral Resources for Lincoln's world-class Kookaburra Gully project in South Australia's Eyre Peninsula. *Lincoln Minerals Limited, ASX Announcement* 19 December 2013.
- Lincoln Minerals, 2015. Maiden graphite resource for second Lincoln deposit in SA's Eyre Peninsula lifts total inventory by >50% in this world-class province. *Lincoln Minerals limited, ASX Announcement* 13 July 2015.
- Australian Graphite Limited, 2015. Community Information Update No.4, Kookaburra Gully Graphite Mine, Mining Lease Proposal. *Lincoln Minerals Limited website, September 2015*
- Lincoln Minerals, 2015. 2014-2015 Annual Report. *Lincoln Minerals Limited October 2015.*

*Information extracted from previously published reports identified in this report is available to view on the Company's website [www.lincolnminerals.com.au](http://www.lincolnminerals.com.au). The company confirms that it is not aware of any new information or data that materially affects the information included in the original market announcements and, in the case of estimates of Mineral Resources, that all material assumptions and technical parameters underpinning the estimates in the relevant market announcements continue to apply and have not materially changed. The company confirms that the form and context in which the Competent Person's findings are presented have not been materially modified from the original market announcements.*





# Kookaburra Gully Mineral Resource

**Table 1. Kookaburra Gully Mineral Resource at a nominal 5% TGC lower cut-off grade**

Mineral Resource Classification	Tonnage (Mt)	Average Grade (% TGC)	Contained Graphite (tonnes)	Density (g/cc)
Indicated	1.47	13.9	204,352	2.57
Inferred	0.73	17.3	127,425	2.52
<b>TOTAL (&gt;5% TGC)</b>	<b>2.20</b>	<b>15.1</b>	<b>331,778</b>	<b>2.55</b>

*Mt = million tonnes    TGC = Total Graphitic Carbon*

**Table 2. Kookaburra Gully Mineral Resource at a nominal 2% TGC lower cut-off grade**

Mineral Resource Classification	Tonnage (Mt)	Average Grade (% TGC)	Contained Graphite (tonnes)	Density (g/cc)
Indicated	2.10	10.6	223,349	2.56
Inferred	1.13	12.2	137,370	2.52
<b>TOTAL (&gt;2% TGC)</b>	<b>3.23</b>	<b>11.2</b>	<b>360,719</b>	<b>2.54</b>

*Mt = million tonnes    TGC = Total Graphitic Carbon*

## Reference

Lincoln Minerals, 2013. Updated Mineral Resources and Metallurgy for Lincoln's world-class Kookaburra Gully project in South Australia's Eyre Peninsula. *Lincoln Minerals Limited, ASX Announcement* December 2013.



# Koppio Mineral Resource

Table 2. Total combined Mineral Resources for Koppio and Kookaburra Gully

Mineral Resource Classification	Cutoff Grade (% TGC)	Tonnage (Mt)	Average Grade (% TGC)	Contained Graphite (tonnes)	Density (g/cc)
<b>Koppio</b>					
High-grade Core (Domain 1) – Inferred	5%	1.85	9.76	180,733	2.67
Low-grade Halo (Domain 2) – Inferred	2%	1.21	3.18	38,560	2.80
<b>Kookaburra Gully</b>					
High-grade Core (Domain 1) - Indicated	5%	1.45	13.74	199,193	2.56
Low-grade Halo (Domain 2) – Indicated	2%	0.62	3.04	18,984	2.54
High-grade Core (Domain 1) – Inferred	5%	0.73	16.17	117,964	2.50
Low-grade Halo (Domain 2) – Inferred	2%	0.40	2.91	11,538	2.54
<b>TOTAL (&gt;2% TGC)</b>		<b>6.26</b>	<b>9.05</b>	<b>566,972</b>	<b>2.63</b>

*Mt = million tonnes TGC = Total Graphitic Carbon*

## Reference:

Lincoln Minerals, 2015. Maiden graphite resource for second Lincoln deposit in SA's Eyre Peninsula lifts total inventory by >50% in this world-class province. *Lincoln Minerals limited, ASX Announcement* 13 July 2015.