



**LINCOLN MINERALS LIMITED**

# **Explorer to Producer**

## **Iron Ore**

**Uranium, Nickel-Cobalt, Base Metals & Gold**

**4 May 2009**





LINCOLN MINERALS LIMITED

## Highlights

- **Development of iron ore mine in Indonesia**
  - **Maiden iron ore resource at Gum Flat**
    - **Nickel-cobalt at Cockabidnie**
    - **Uranium at Wilcherry**

Ongoing support from Indian metals and iron ore mining group

**Mineral Enterprises Limited**

40% interest in Gum Flat Project ahead of schedule

3<sup>rd</sup> in Resource Stocks “Best of Best” People’s Choice 2008  
for companies with market capital under \$200 million

**2009 - moving forward from exploration to  
production in only 2 years after listing**

# Disclaimer

This presentation has been prepared by Lincoln Minerals Limited ("LML") as an aid to a spoken explanation. The information contained in this presentation is a professional opinion only and is given in good faith.

The presentation is for the information of shareholders and is not intended to guide any investment decisions in LML.

Some information in this presentation has been derived from third parties and though LML believes it to be reliable as at the date of this document, LML makes no representation or warranty as to its accuracy, reliability or completeness. To the extent permitted by law, LML and its officers, employees, related bodies corporate and agents ("Agents") disclaim all liability, direct, indirect or consequential (and whether or not arising out of the negligence, default or lack of care of LML and/or any of its Agents) for any loss or damage suffered by a Recipient, a purchaser or other persons arising out of, or in connection with, any use or reliance on this presentation or information.

The Recipient agrees that it shall not seek to sue or hold LML or its Agents liable in any such respect for the provision of this presentation or any other information.

Information in this presentation that relates to exploration activity and results was compiled by Dr AJ Parker who is a Member of the Australasian Institute of Geoscientists. Dr Parker is Managing Director of Lincoln Minerals Limited and has sufficient experience relevant to the styles of mineralisation and to the activities which are being presented to qualify as a Competent Person as defined by the JORC code, 2004. Dr Parker consents to the release of the information compiled in this presentation in the form and context in which it appears.

*It is emphasized that exploration target tonnage estimates given in this report are entirely conceptual in nature and it is uncertain if further exploration will result in the estimation of a Mineral Resource.*



# LINCOLN MINERALS LIMITED

- Listed on ASX 9 March 2007 after raising \$7 million by public subscription ✓
- 75,372,221 Shares + 35,776,854 listed Options + 9,313,332 unlisted Options
- Market capitalisation (May 2009 @ 10 cents/share) \$7.5 million ✓
- Cash on hand at end March 2009 \$3.1 million ✓
- Located in an established world class mineral belts (Indonesia & Gawler Craton) ✓
- Experienced management and technical team ✓
- Significant assets:
  - Desa Mirah (Indonesia) Iron Ore Mine ✓
  - Gum Flat (South Australia) Inferred Iron Ore Resource ✓





# DESA MIRAH IRON ORE MINE

- Located in south-central Kalimantan (Borneo)
- High grade hematite – up to 68.7% Fe
- 7,000-10,000t stockpile:

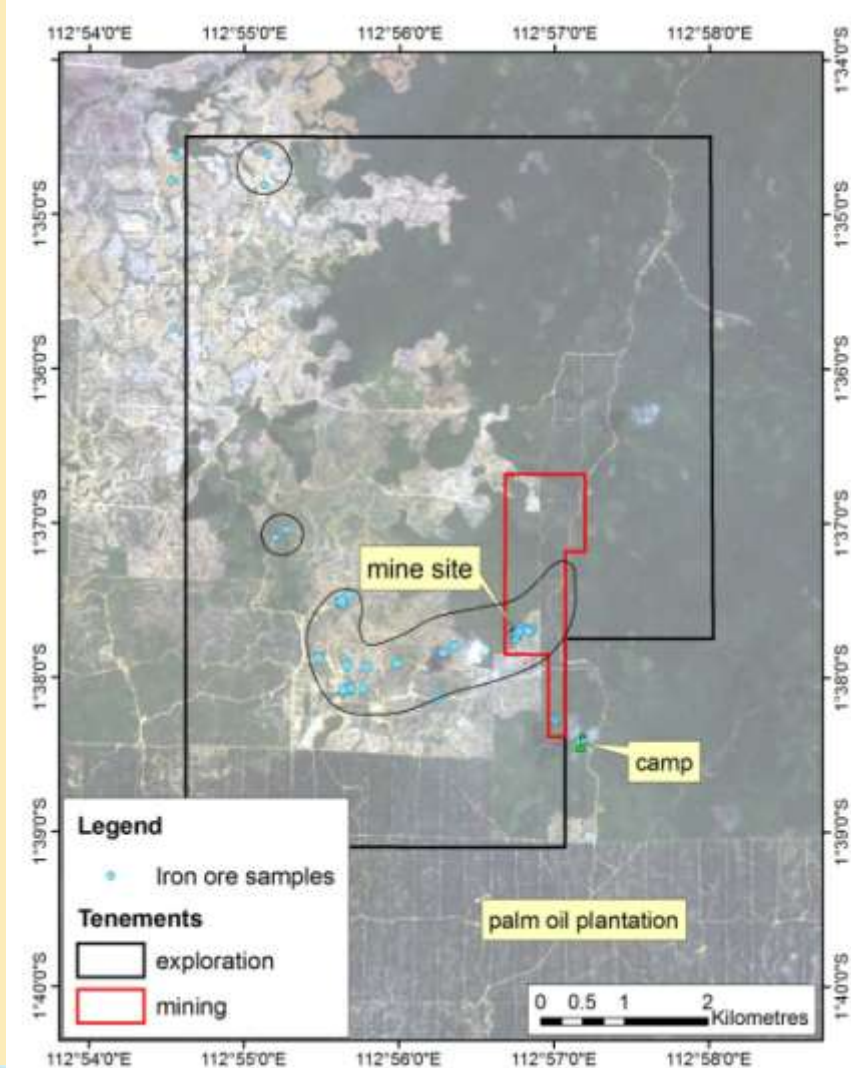
Fe%	SiO <sub>2</sub> %	Al <sub>2</sub> O <sub>3</sub> %	P%	LOI%
66.2	2.02	1.31	0.04	1.85

- Ready to go into production with all approvals & permits now in place including jetty



## DESA MIRAH IRON ORE MINE

- Earning 45% interest in mine and exploration concession
- US\$2 million from LML's share of mine profits
- Initial production 20,000 tonnes per month
- Trenching and outcrop sampling have outlined resource and exploration target
- Sufficient resources to support initial mine development
- Weigh bridge & jetty set up near Pundu 70km from mine site



High grade (>62% Fe) outcrops  
extend over a strike length of at  
least 3.5 km



112°55'0"E

112°56'0"E

112°57'0"E

# DESA MIRAH IRON ORE MINE

1°37'0"S

1°37'0"S

1°38'0"S

1°38'0"S

## Legend

### Iron ore outcrops

- < 58% Fe
- 58% - 62% Fe
- 62% - 68.6% Fe
- no assay

### Tenements

- exploration
- mining

mine site

ROM

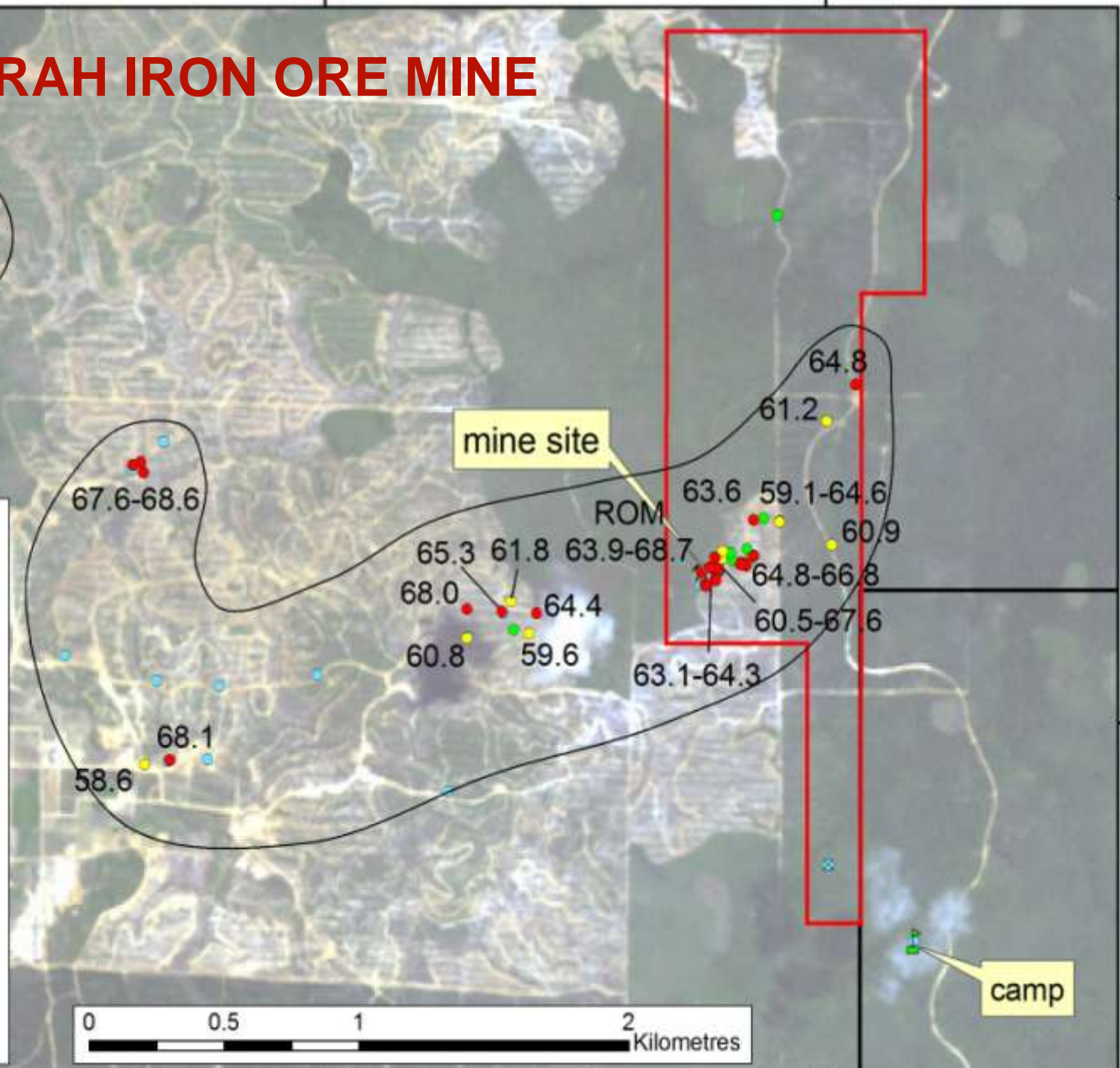
camp



112°55'0"E

112°56'0"E

112°57'0"E

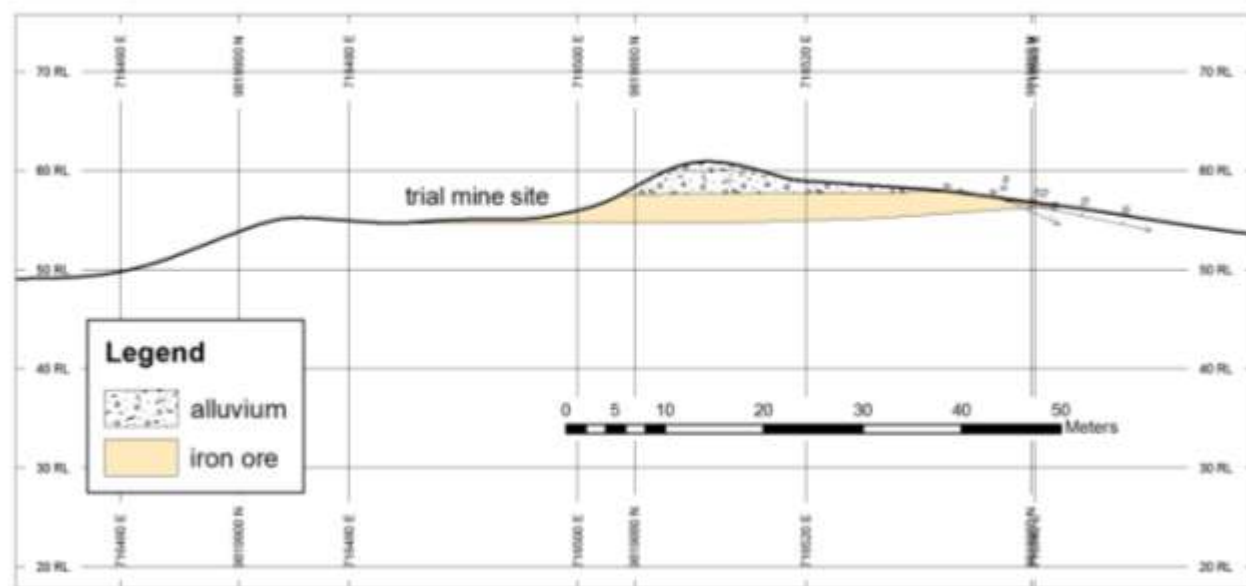


# DESA MIRAH IRON ORE MINE

- Exciting development for Lincoln Minerals
- Set to become iron ore producer only 2 years after listing
- Little or no cost to existing investors
- Cash-flow positive in about 6 months from mine startup
- Opens up other new opportunities for the Company in Indonesia
- Enables Lincoln to pursue development of its advanced iron ore exploration projects in South Australia



Section 9819880N





# South Australia Core Projects

## Iron Ore

- Gum Flat, Wanilla JV & Cummins

## Nickel-Cobalt

- Cockabidnie & Tumby Bay

## Uranium

- Wilcherry, Mount Hill, Cockabidnie, Carinya, Kimba Gap & Tumby Bay

## Copper, Gold & Base Metals

- Cockabidnie, Tumby Bay & Torrens



ELs	Exclusive Rights	Area (sq km)
10	All minerals	1,764
15	All except iron ore	1,947
1	All except uranium	1,000
<b>TOTAL</b>		<b>4,711</b>

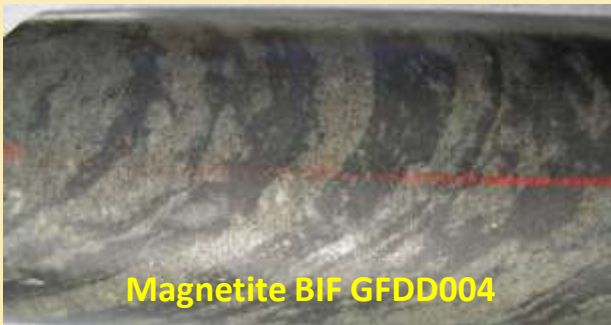
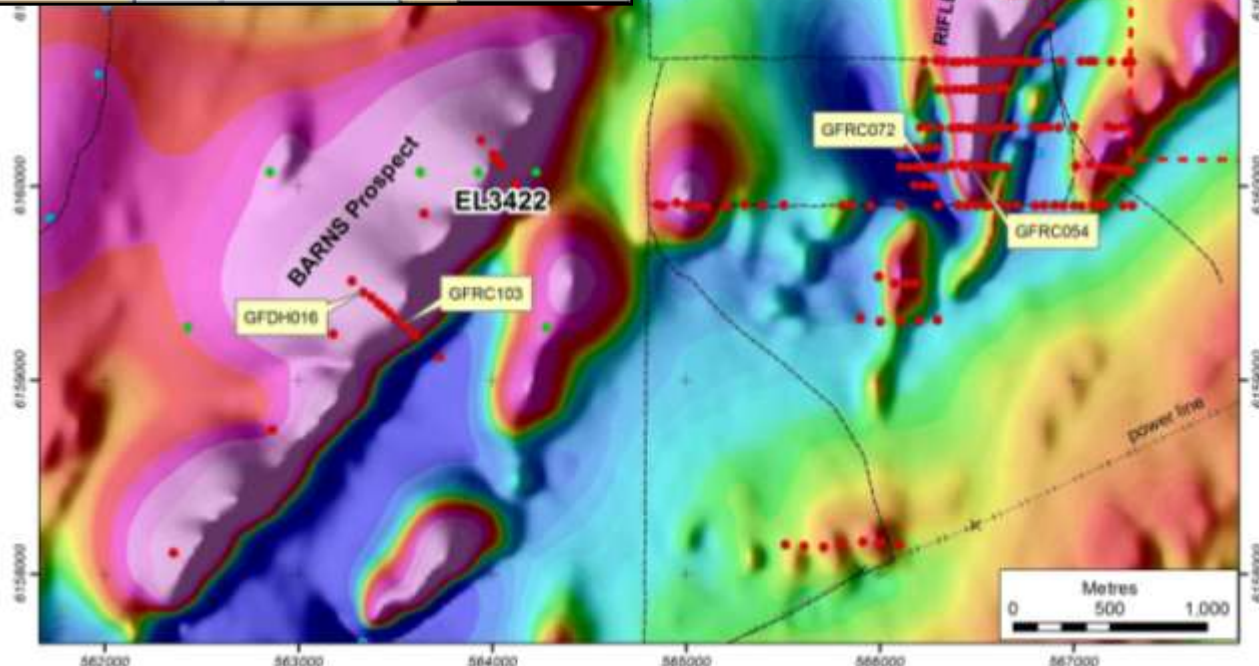
# Gum Flat Iron Ore Project

## EL 3422

LML 60%

Indian Mineral Enterprises  
Group 40%

- Several shallow **hematite & magnetite iron ore** deposits within 20km of Port Lincoln
- Completed Phase 2-3 drilling & defined maiden resource
- Hematite BIF with up to 60.5% Fe
- Magnetite BIF with up to 43.9% magnetic concentrate
- Magnetic cons grading up to 71% Fe
- High intensity magnetic anomalies aggregate length >7km



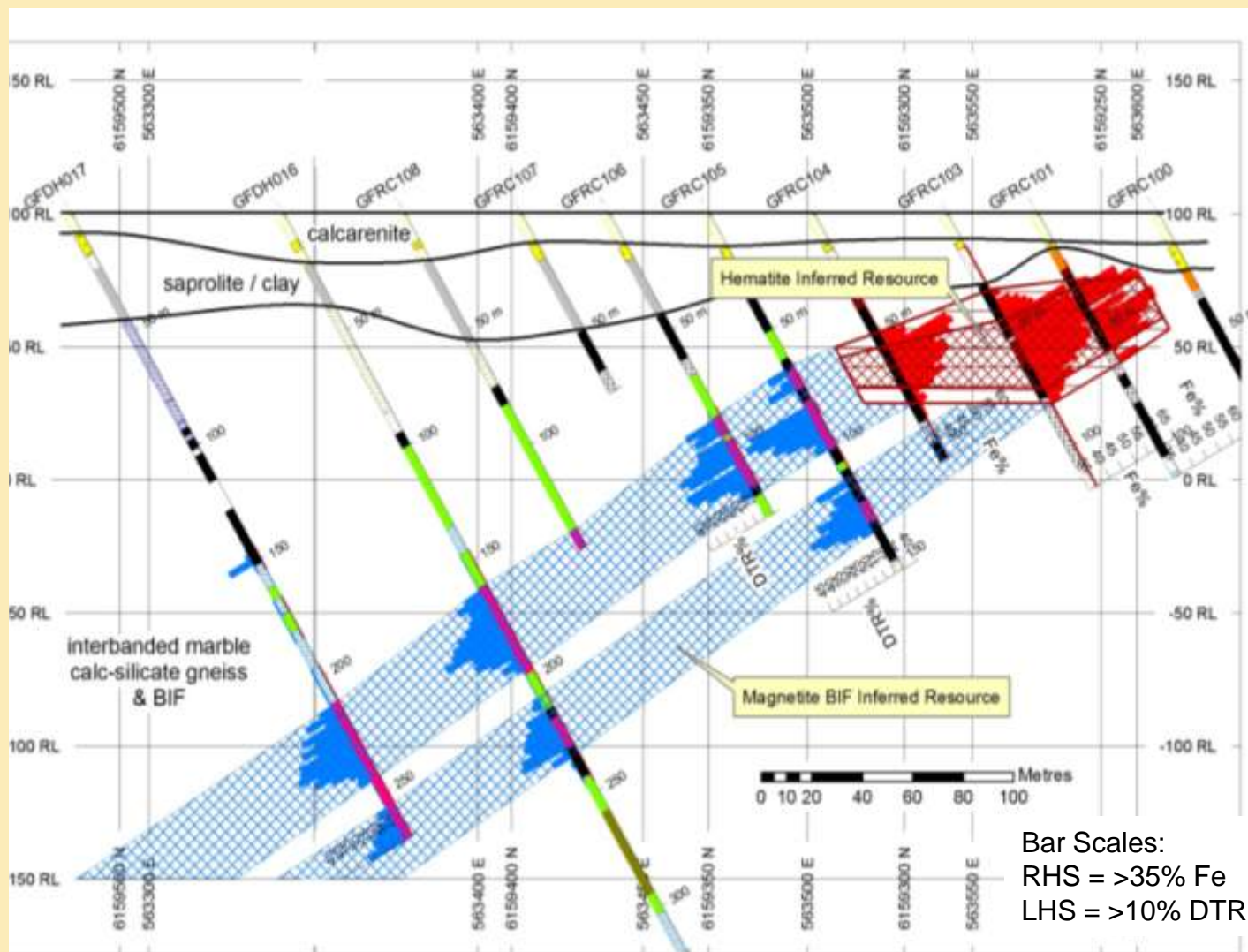
Magnetite BIF GFDD004



# Gum Flat Iron Ore Project

## Barns Prospect

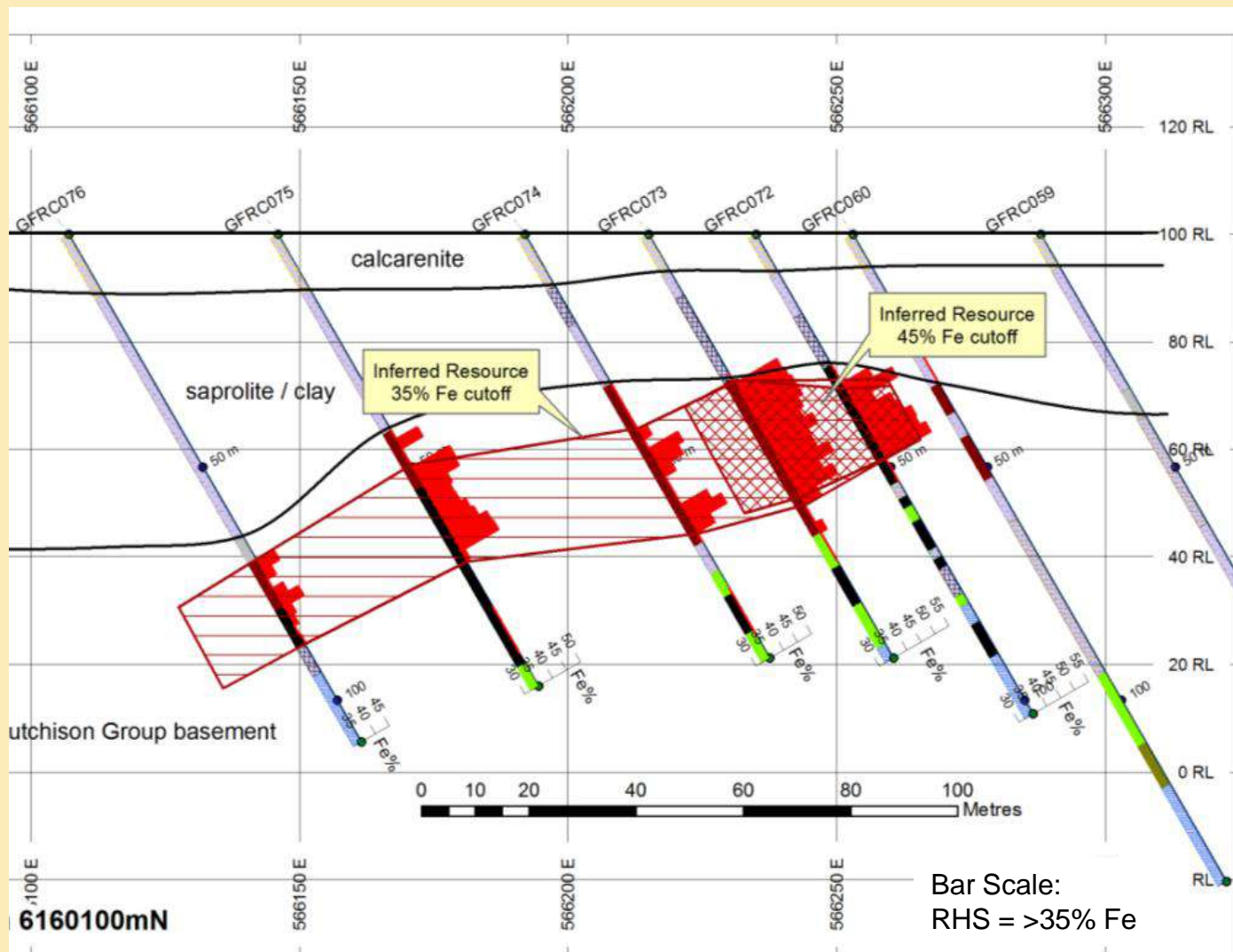
- Shallow dipping 80m thick BIF beneath thin cover sequence
- Hematite down to ca. 70m depth then magnetite BIF
- Inferred hematite resource 1.3 Mt @ 47.1% Fe with high grade core 0.9 Mt @ 52.7% Fe
- GFRC103 18m DSO @ 58.2% Fe
- Inferred magnetite resource 49.8 Mt @ 20.2% DTR (10.1 Mt mag concentrate @ 65% Fe)



# Gum Flat Iron Ore Project

## Rifle Range & Sheoak West Prospects

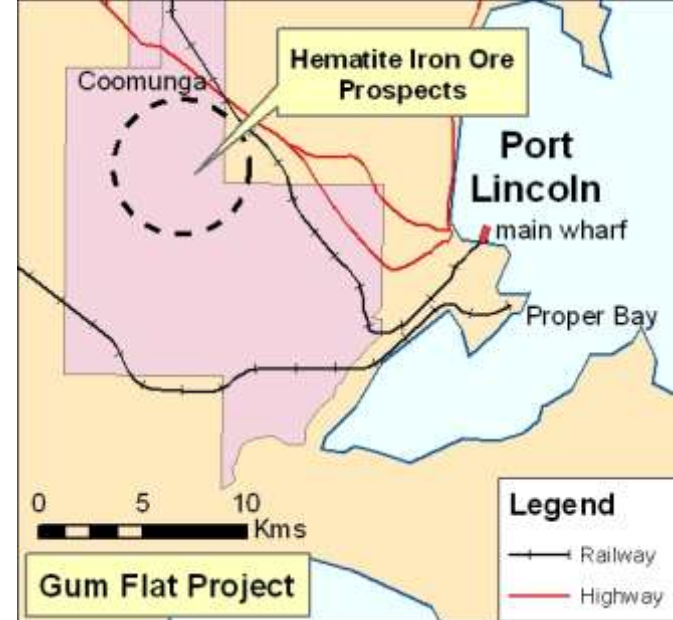
- Shallow dipping BIF beneath thin cover
- Hematite down to ca. 70m depth then magnetite BIF
- Inferred hematite resource 1.2 Mt @ 43.8% Fe with high grade core 0.3 Mt @ 48.3% Fe
- Inferred magnetite resource 5.4 Mt @ 22.6% DTR (1.2 Mt mag concentrate @ 68.2% Fe)



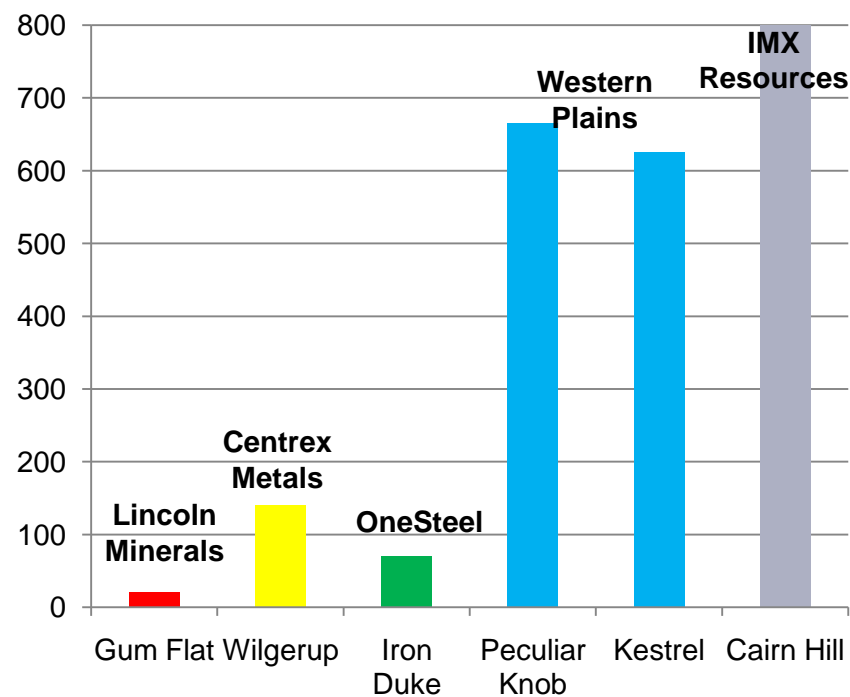


# Gum Flat Iron Ore Project

- Total Inferred Resources:
  - Magnetite 55 Mt @ 20.6% DTR
  - Hematite 1.2 Mt at 51.6% Fe (45% Fe cutoff) or 2.5 Mt at 45.5% Fe (35% Fe cutoff)
- Total Exploration Targets:
  - Magnetite 125-200 Mt at 15-25% Fe
  - Hematite 3-10 Mt at 40-55% Fe
- Only half the 7km strike length explored
- Close to shipping port & infrastructure
- Ongoing strong support from Indian Mineral Enterprises group
- Framework for future scoping & feasibility studies



## Distance from Port



# Cockabidnie Project

## Campoona Nickel-Cobalt Discovery

- Following discovery in Sept 2007, drilling in April 2008 has defined

### AN EXCITING NEW LATERITIC NICKEL-COBALT PROSPECT (up to 1.15% Ni & 0.33% Co)

- Including 30m @ 0.8% Ni equivalent ( $\text{Ni} + 5 \times \text{Co}$ )
- + good base metal, gold & uranium results
- 3 km long exploration target within 10-20km of railway & Darke Peak
- Scoping study to examine leaching properties

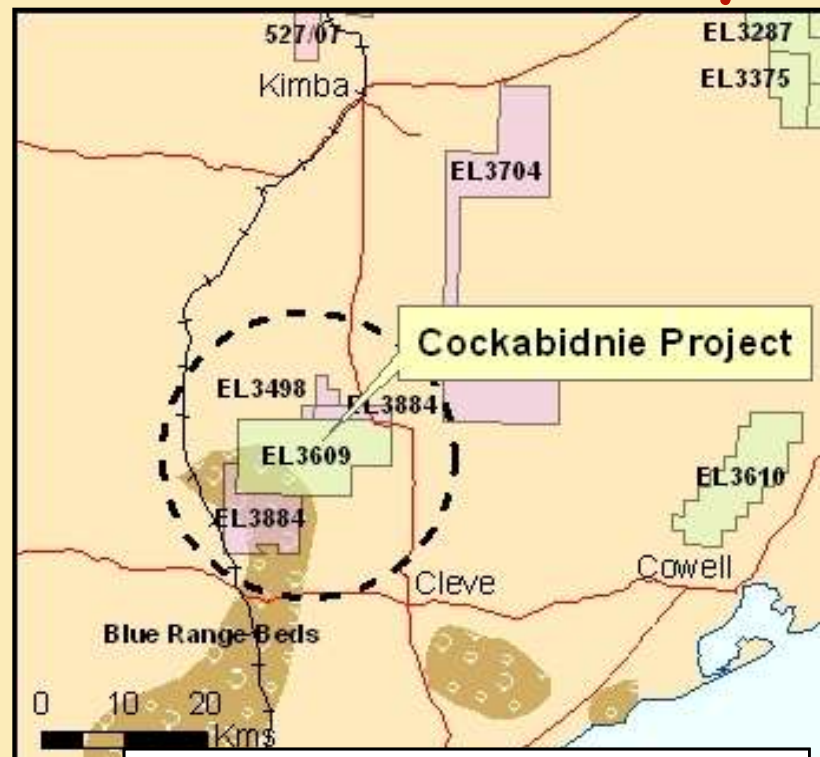


Sand & Ferricrete

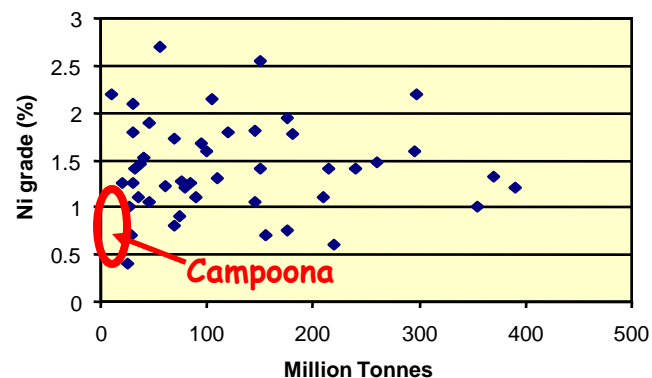
Limonite 0.68% Ni

Saprolite 0.34% Ni

Gabbro  
0.1% Ni



Selected Nickel Laterite Resources

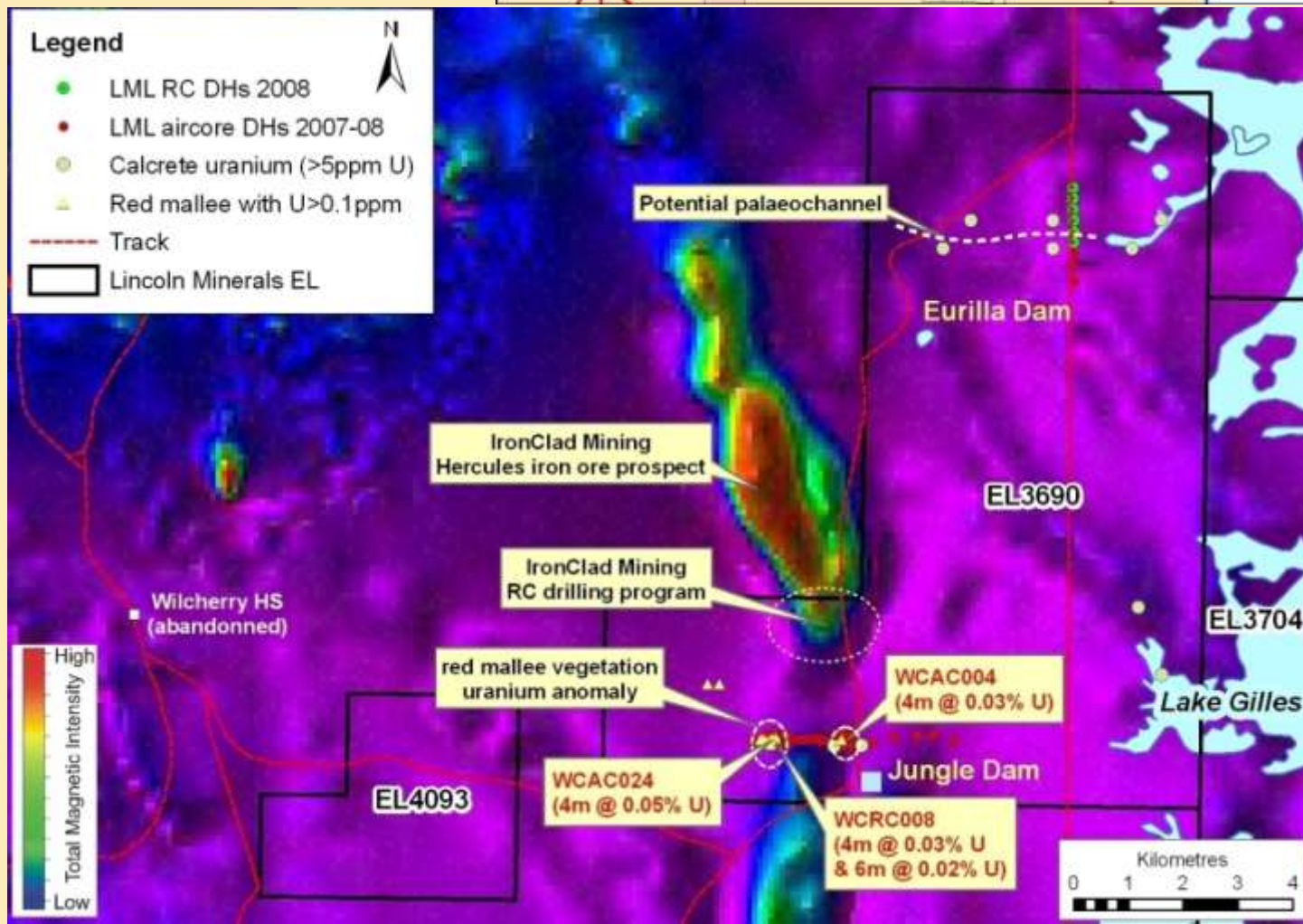




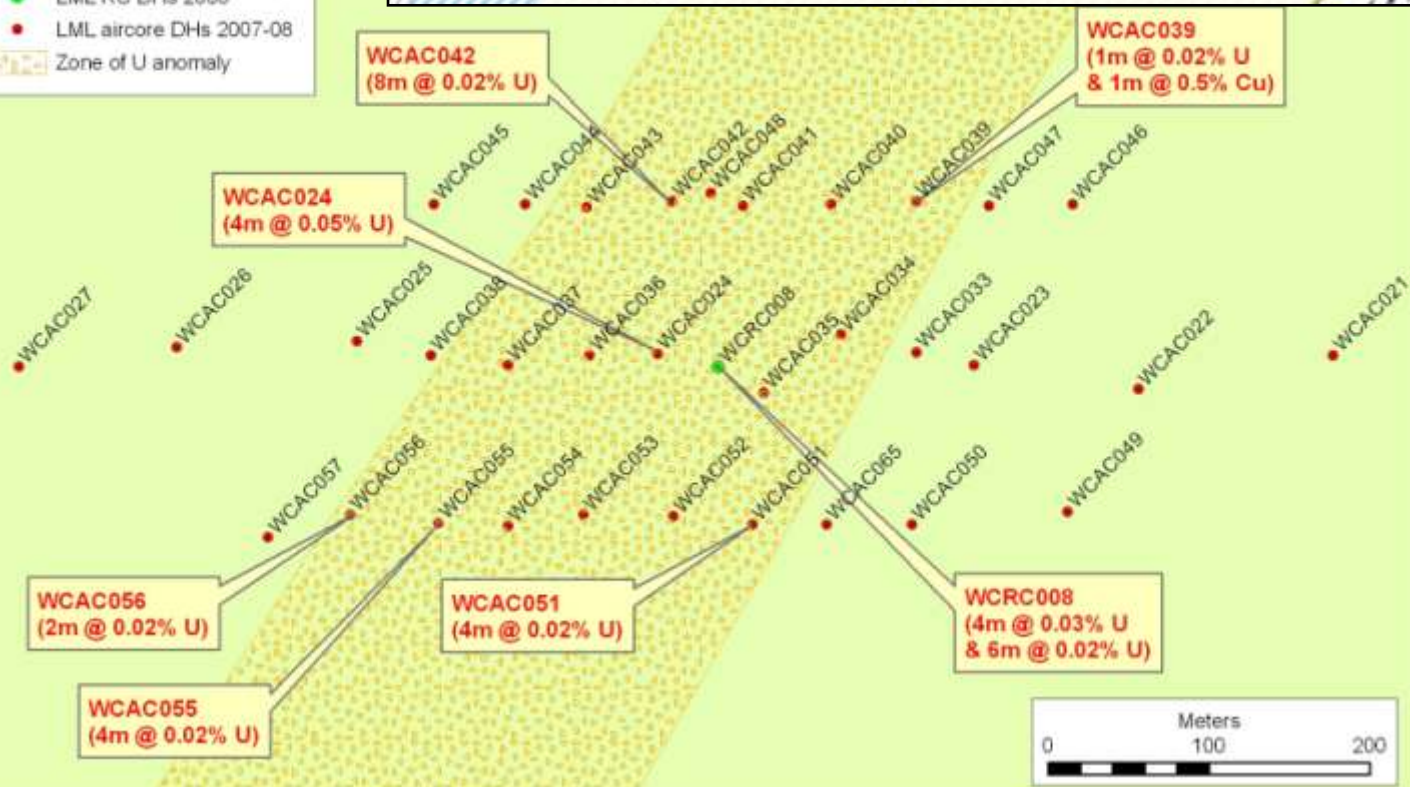
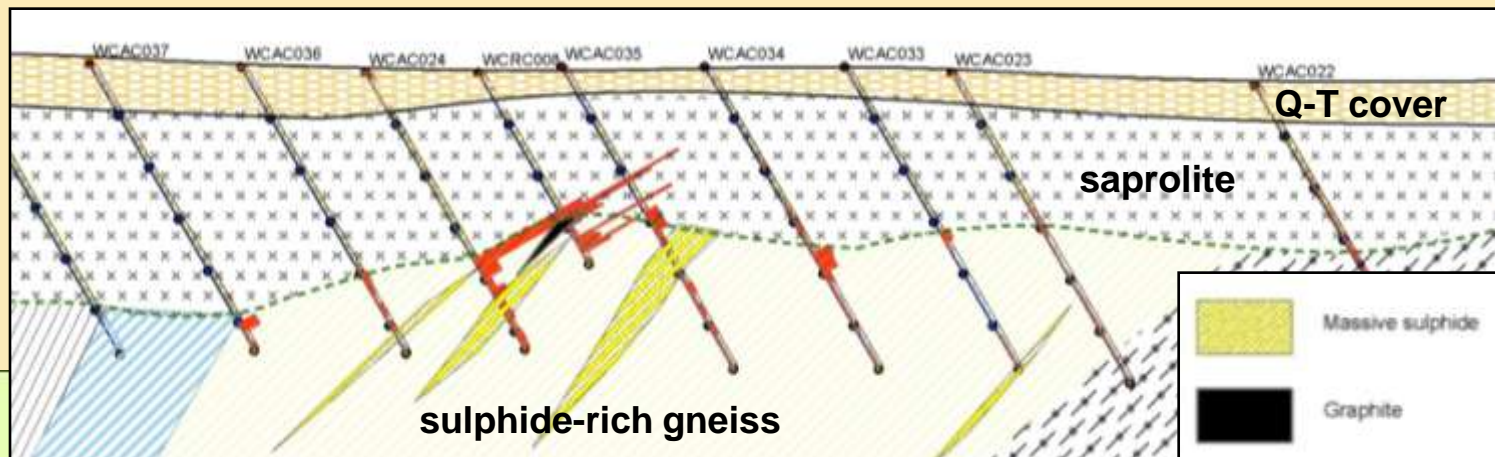
# Wilcherry Uranium Prospect



- 2007-08 drilling intersected up to **0.06% uranium** with massive sulphide, graphite & base metals up to **0.5% copper**
- Mineralisation continuous over >200m strike length
- U occurs as Francoisite-Ce
- Uranium anomalism in red mallee & blue bush extends for >1km



# Wilcherry Uranium Prospect







# LINCOLN MINERALS LIMITED

## Summary

### **INDONESIA** **Desa Mirah Iron Ore Mine**

**Taking Lincoln Minerals from explorer to producer & cash flow positive  
in about 6 months**

### **SOUTH AUSTRALIA**

**Maintaining an active exploration & resource definition program combined with  
scoping studies to consolidate opportunities for development of the Company's**

### **Iron Ore – Uranium – Nickel-Cobalt**

**prospects on Eyre Peninsula**

**Strong ongoing support from Indian metals and iron-ore mining group  
Mineral Enterprises Limited**

**Management & operational team with extensive expertise and knowledge of mining,  
minerals exploration and geology of the Gawler Craton**

**Sound cash position**

4 May 2009

